

Product datasheet for **TA315288**

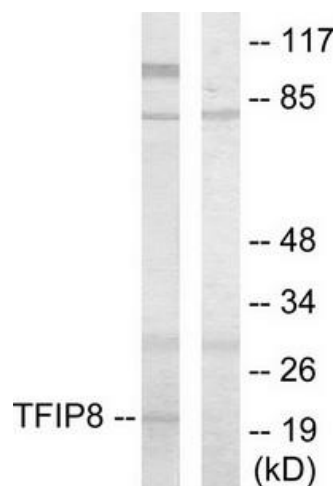
TNFAIP8 Rabbit Polyclonal Antibody

Product data:

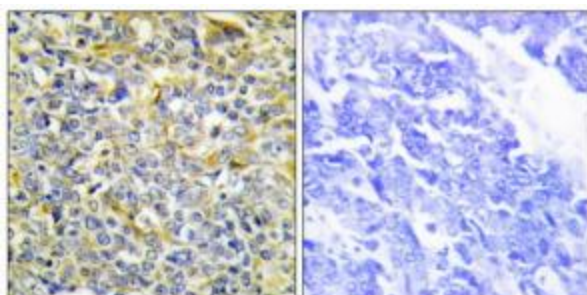
Product Type:	Primary Antibodies
Applications:	IF, IHC, WB
Recommended Dilution:	WB: 1:500~1:3000, IHC: 1:50~1:100, IF: 1:100~1:500, ELISA: 1:10000
Reactivity:	Human, Mouse
Host:	Rabbit
Isotype:	IgG
Clonality:	Polyclonal
Immunogen:	The antiserum was produced against synthesized peptide derived from internal of human TFIP8.
Formulation:	Phosphate buffered saline (without Mg ²⁺ and Ca ²⁺), pH 7.4, 150mM NaCl, 0.02% sodium azide and 50% glycerol.
Concentration:	lot specific
Purification:	The antibody was affinity-purified from rabbit antiserum by affinity-chromatography using epitope-specific immunogen.
Conjugation:	Unconjugated
Storage:	Store at -20°C as received.
Stability:	Stable for 12 months from date of receipt.
Gene Name:	TNF alpha induced protein 8
Database Link:	NP_001071122 Entrez Gene 106869 Mouse Entrez Gene 25816 Human O95379
Synonyms:	GG2-1; MDC-3.13; NDED; SCC-S2; SCCS2
Note:	TFIP8 antibody detects endogenous levels of total TFIP8 protein.
Protein Families:	Druggable Genome



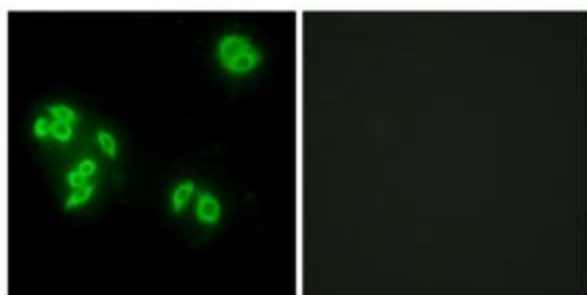
[View online »](#)

Product images:

Western blot analysis of extracts from HUVEC cells, using TFIP8 antibody. The lane on the right is treated with the synthesized peptide.



Immunohistochemistry analysis of paraffin-embedded human lung carcinoma tissue using TFIP8 antibody. The picture on the right is treated with the synthesized peptide.



Immunofluorescence analysis of A549 cells, using TFIP8 antibody. The picture on the right is treated with the synthesized peptide.