

## Product datasheet for **TA315284**

### SLI (SHC2) Rabbit Polyclonal Antibody

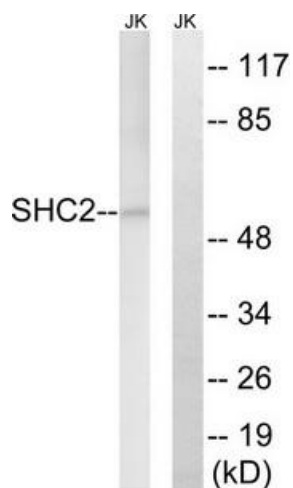
#### Product data:

Product Type:	Primary Antibodies
Applications:	WB
Recommended Dilution:	WB: 1:500~1:3000, ELISA: 1:10000
Reactivity:	Human, Rat
Host:	Rabbit
Isotype:	IgG
Clonality:	Polyclonal
Immunogen:	The antiserum was produced against synthesized peptide derived from internal of human SHC2.
Formulation:	Phosphate buffered saline (without Mg <sup>2+</sup> and Ca <sup>2+</sup> ), pH 7.4, 150mM NaCl, 0.02% sodium azide and 50% glycerol.
Concentration:	lot specific
Purification:	The antibody was affinity-purified from rabbit antiserum by affinity-chromatography using epitope-specific immunogen.
Conjugation:	Unconjugated
Storage:	Store at -20°C as received.
Stability:	Stable for 12 months from date of receipt.
Gene Name:	SHC adaptor protein 2
Database Link:	<a href="#">NP_036567</a> <a href="#">Entrez Gene 314612 Rat</a> <a href="#">Entrez Gene 25759 Human</a> <a href="#">P98077</a>
Synonyms:	SCK; SHCB; SLI
Note:	SHC2 antibody detects endogenous levels of total SHC2 protein.
Protein Pathways:	Chemokine signaling pathway, Chronic myeloid leukemia, ErbB signaling pathway, Focal adhesion, Glioma, Insulin signaling pathway, Natural killer cell mediated cytotoxicity, Neurotrophin signaling pathway, VEGF signaling pathway



[View online »](#)

## Product images:



Western blot analysis of extracts from MCF-7 cells, HuvEc cells and Jurkat cells, using SHC2 antibody. The lane on the right is treated with the synthesized peptide.