

Product datasheet for **TA315281**

Atp1a1 Rabbit Polyclonal Antibody

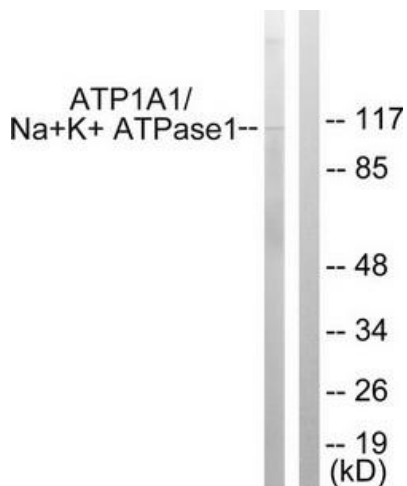
Product data:

| | |
|-----------------------|--|
| Product Type: | Primary Antibodies |
| Applications: | IF, WB |
| Recommended Dilution: | WB: 1:500~1:3000, IF: 1:100~1:500, ELISA: 1:40000 |
| Reactivity: | Human, Rat |
| Host: | Rabbit |
| Isotype: | IgG |
| Clonality: | Polyclonal |
| Immunogen: | The antiserum was produced against synthesized non-phosphopeptide derived from human ATP1a1/Na ⁺ K ⁺ ATPase1 around the phosphorylation site of serine 23 (K-K-SP-K-K) |
| Formulation: | Phosphate buffered saline (without Mg ²⁺ and Ca ²⁺), pH 7.4, 150mM NaCl, 0.02% sodium azide and 50% glycerol. |
| Concentration: | lot specific |
| Purification: | The antibody was affinity-purified from rabbit antiserum by affinity-chromatography using epitope-specific immunogen. |
| Conjugation: | Unconjugated |
| Storage: | Store at -20°C as received. |
| Stability: | Stable for 12 months from date of receipt. |
| Gene Name: | ATPase Na ⁺ /K ⁺ transporting subunit alpha 1 |
| Database Link: | NP_036636 Entrez Gene 476 Human Entrez Gene 24211 Rat P06685 |
| Synonyms: | MGC3285; MGC51750 |
| Note: | ATP1.1/Na ⁺ K ⁺ ATPase1 (Ab-23) antibody detects endogenous levels of total ATP1.1/Na ⁺ K ⁺ ATPase1 protein. |

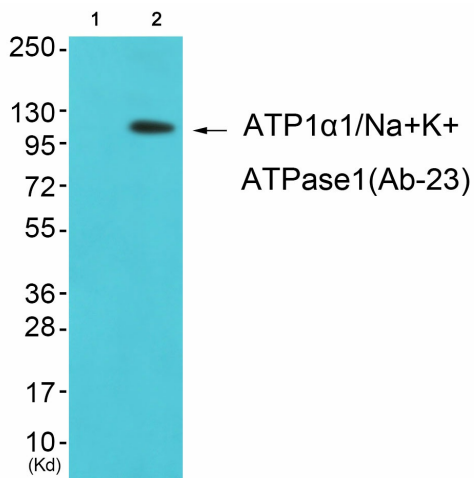


[View online »](#)

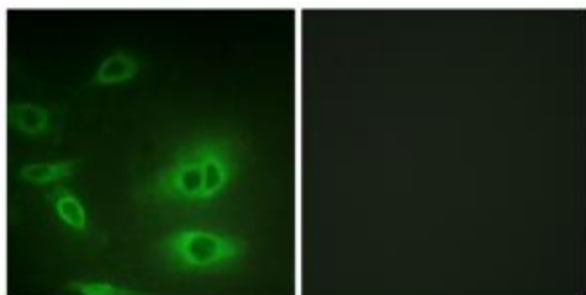
Product images:



Western blot analysis of extracts from HeLa cells, using ATP1a1/Na+K+ ATPase1 (Ab-23) antibody. The lane on the right is treated with the synthesized peptide.



Western blot analysis of extracts from K562 cells (Lane 2), using ATP1a1/Na+K+ ATPase1 (Ab-23) Antibody. The lane on the left is treated with synthesized peptide.



Immunofluorescence analysis of HeLa cells, using ATP1a1/Na+K+ ATPase1 (Ab-23) antibody. The picture on the right is treated with the synthesized peptide.