

## Product datasheet for **TA315277**

### Ets1 Rabbit Polyclonal Antibody

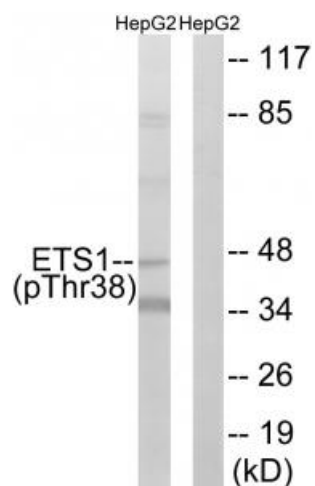
#### Product data:

Product Type:	Primary Antibodies
Applications:	IF, IHC, WB
Recommended Dilution:	WB: 1:500~1:3000, IHC: 1:50~1:100, IF: 1:100~1:500, ELISA: 1:10000
Reactivity:	Human, Mouse
Modifications:	Phospho-specific
Host:	Rabbit
Isotype:	IgG
Clonality:	Polyclonal
Immunogen:	The antiserum was produced against synthesized phosphopeptide derived from human ETS1 around the phosphorylation site of threonine 38 (L-L-TP-P-S).
Formulation:	Phosphate buffered saline (without Mg <sup>2+</sup> and Ca <sup>2+</sup> ), pH 7.4, 150mM NaCl, 0.02% sodium azide and 50% glycerol.
Concentration:	lot specific
Purification:	The antibody was affinity-purified from rabbit antiserum by affinity-chromatography using epitope-specific immunogen.
Conjugation:	Unconjugated
Storage:	Store at -20°C as received.
Stability:	Stable for 12 months from date of receipt.
Gene Name:	E26 avian leukemia oncogene 1, 5' domain
Database Link:	<a href="#">NP_035938</a> <a href="#">Entrez Gene 2113 Human</a> <a href="#">Entrez Gene 23871 Mouse</a> <a href="#">P27577</a>
Synonyms:	ETS-1; EWSR2; FLJ10768; p54
Note:	ETS1 (Phospho-Thr38) antibody detects endogenous levels of ETS1 only when phosphorylated at threonine 38.

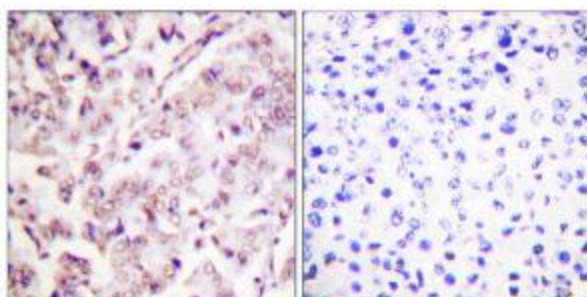


[View online »](#)

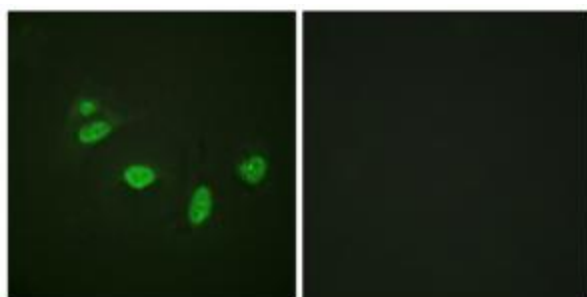
## Product images:



Western blot analysis of extracts from HepG2 cells, using ETS1 (Phospho-Thr38) antibody. The lane on the right is treated with the synthesized peptide.



Immunohistochemistry analysis of paraffin-embedded human breast carcinoma tissue, using ETS1 (Phospho-Thr38) antibody. The picture on the right is treated with the synthesized peptide.



Immunofluorescence analysis of HeLa cells, using ETS1 (Phospho-Thr38) antibody. The picture on the right is treated with the synthesized peptide.