

Product datasheet for **TA315273**

IL17RA Rabbit Polyclonal Antibody

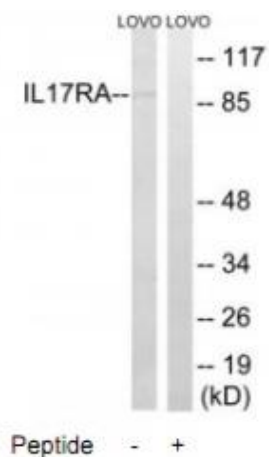
Product data:

Product Type:	Primary Antibodies
Applications:	WB
Recommended Dilution:	WB: 1:500~1:3000, IHC: 1:50~1:100, ELISA: 1:60000
Reactivity:	Mouse, Human
Host:	Rabbit
Isotype:	IgG
Clonality:	Polyclonal
Immunogen:	The antiserum was produced against synthesized peptide derived from internal of human IL17RA.
Formulation:	Phosphate buffered saline (without Mg ²⁺ and Ca ²⁺), pH 7.4, 150mM NaCl, 0.02% sodium azide and 50% glycerol.
Concentration:	lot specific
Purification:	The antibody was affinity-purified from rabbit antiserum by affinity-chromatography using epitope-specific immunogen.
Conjugation:	Unconjugated
Storage:	Store at -20°C as received.
Stability:	Stable for 12 months from date of receipt.
Gene Name:	interleukin 17 receptor A
Database Link:	NP_055154 Entrez Gene 16172 Mouse Entrez Gene 23765 Human Q96F46
Synonyms:	CANDF5; CD217; CDw217; hIL-17R; IL-17RA; IL17R
Note:	IL17RAntibody detects endogenous levels of total IL17RAprotein.
Protein Families:	Druggable Genome, Transmembrane
Protein Pathways:	Cytokine-cytokine receptor interaction



[View online »](#)

Product images:



Western blot analysis of extracts from LOVO cells, using IL17RA antibody. The lane on the right is treated with the synthesized peptide.