

Product datasheet for **TA315272**

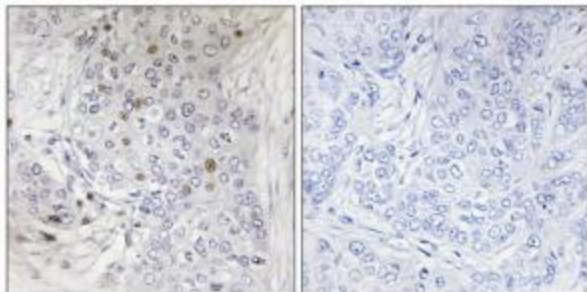
MAFF Rabbit Polyclonal Antibody

Product data:

Product Type:	Primary Antibodies
Applications:	IHC
Recommended Dilution:	IHC: 1:50~1:100, ELISA: 1:10000
Reactivity:	Human, Mouse
Host:	Rabbit
Isotype:	IgG
Clonality:	Polyclonal
Immunogen:	The antiserum was produced against synthesized peptide derived from internal of human MAFF.
Formulation:	Phosphate buffered saline (without Mg ²⁺ and Ca ²⁺), pH 7.4, 150mM NaCl, 0.02% sodium azide and 50% glycerol.
Concentration:	lot specific
Purification:	The antibody was affinity-purified from rabbit antiserum by affinity-chromatography using epitope-specific immunogen.
Conjugation:	Unconjugated
Storage:	Store at -20°C as received.
Stability:	Stable for 12 months from date of receipt.
Gene Name:	MAF bZIP transcription factor F
Database Link:	NP_690617 Entrez Gene 17133 Mouse Entrez Gene 23764 Human Q9ULX9
Synonyms:	hMafF; OTTHUMP00000028701; transcription factor MAFF; U-MAF; v-maf avian musculoaponeurotic fibrosarcoma oncogene family protein F; v-maf musculoaponeurotic fibrosarcoma oncogene homolog F (avian)
Note:	MAFF antibody detects endogenous levels of total MAFF protein.
Protein Families:	Druggable Genome, Transcription Factors



[View online »](#)

Product images:

Immunohistochemistry analysis of paraffin-embedded human breast carcinoma tissue, using MAFF antibody. The picture on the right is treated with the synthesized peptide.