

Product datasheet for **TA315270**

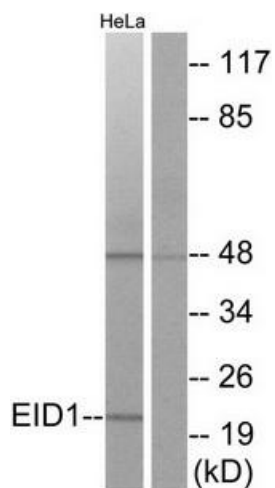
EID1 Rabbit Polyclonal Antibody

Product data:

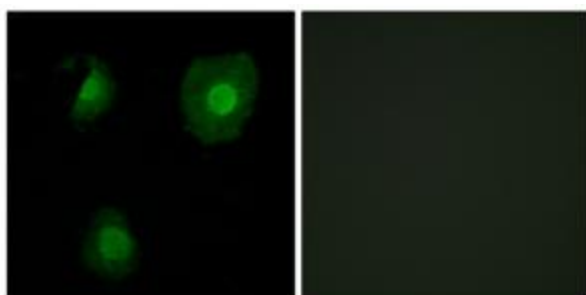
Product Type:	Primary Antibodies
Applications:	IF, WB
Recommended Dilution:	WB: 1:500~1:3000, IF: 1:100~1:500, ELISA: 1:10000
Reactivity:	Human
Host:	Rabbit
Isotype:	IgG
Clonality:	Polyclonal
Immunogen:	The antiserum was produced against synthesized peptide derived from internal of human EID1.
Formulation:	Phosphate buffered saline (without Mg ²⁺ and Ca ²⁺), pH 7.4, 150mM NaCl, 0.02% sodium azide and 50% glycerol.
Concentration:	lot specific
Purification:	The antibody was affinity-purified from rabbit antiserum by affinity-chromatography using epitope-specific immunogen.
Conjugation:	Unconjugated
Storage:	Store at -20°C as received.
Stability:	Stable for 12 months from date of receipt.
Gene Name:	EP300 interacting inhibitor of differentiation 1
Database Link:	NP_055150 Entrez Gene 23741 Human Q9Y6B2
Synonyms:	C15orf3; CR11; EID-1; IRO45620; PNAS-22; PTD014; RBP21
Note:	EID1 antibody detects endogenous levels of total EID1 protein.



[View online »](#)

Product images:

Western blot analysis of extracts from HeLa cells, using EID1 antibody. The lane on the right is treated with the synthesized peptide.



Immunofluorescence analysis of A549 cells, using EID1 antibody. The picture on the right is treated with the synthesized peptide.