

Product datasheet for **TA315264**

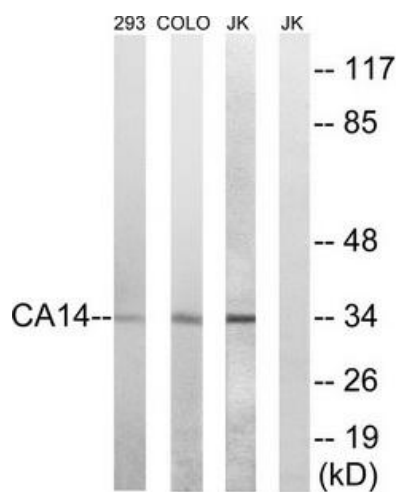
Carbonic Anhydrase XIV (CA14) Rabbit Polyclonal Antibody

Product data:

Product Type:	Primary Antibodies
Applications:	WB
Recommended Dilution:	WB: 1:500~1:3000, ELISA: 1:5000
Reactivity:	Human, Mouse, Rat
Host:	Rabbit
Isotype:	IgG
Clonality:	Polyclonal
Immunogen:	The antiserum was produced against synthesized peptide derived from internal of human CA14.
Formulation:	Phosphate buffered saline (without Mg ²⁺ and Ca ²⁺), pH 7.4, 150mM NaCl, 0.02% sodium azide and 50% glycerol.
Concentration:	lot specific
Purification:	The antibody was affinity-purified from rabbit antiserum by affinity-chromatography using epitope-specific immunogen.
Conjugation:	Unconjugated
Storage:	Store at -20°C as received.
Stability:	Stable for 12 months from date of receipt.
Gene Name:	carbonic anhydrase 14
Database Link:	NP_036245 Entrez Gene 23632 Human Q9ULX7
Synonyms:	CAXiV
Note:	CA14 antibody detects endogenous levels of total CA14 protein.
Protein Families:	Druggable Genome, Transmembrane
Protein Pathways:	Nitrogen metabolism



[View online »](#)

Product images:


Western blot analysis of extracts from 293 cells, COLO cells, and Jurkat cells, using CA14 antibody. The lane on the right is treated with the synthesized peptide.