

Product datasheet for **TA315262**

PRKCBP1 (ZMYND8) Rabbit Polyclonal Antibody

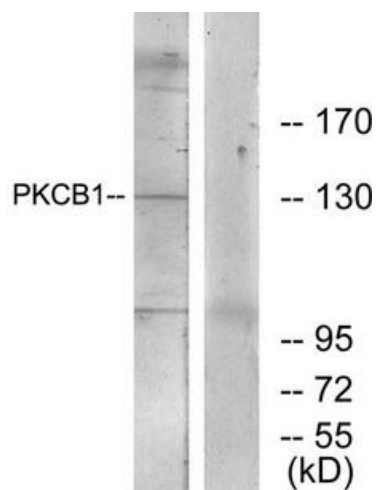
Product data:

Product Type:	Primary Antibodies
Applications:	WB
Recommended Dilution:	WB: 1:500~1:3000, ELISA: 1:1000
Reactivity:	Human
Host:	Rabbit
Isotype:	IgG
Clonality:	Polyclonal
Immunogen:	The antiserum was produced against synthesized peptide derived from internal of human PKCB1.
Formulation:	Phosphate buffered saline (without Mg ²⁺ and Ca ²⁺), pH 7.4, 150mM NaCl, 0.02% sodium azide and 50% glycerol.
Concentration:	lot specific
Purification:	The antibody was affinity-purified from rabbit antiserum by affinity-chromatography using epitope-specific immunogen.
Conjugation:	Unconjugated
Storage:	Store at -20°C as received.
Stability:	Stable for 12 months from date of receipt.
Gene Name:	zinc finger MYND-type containing 8
Database Link:	NP_036540 Entrez Gene 23613 Human Q9ULU4
Synonyms:	PRKCBP1; PRO2893; RACK7
Note:	PKCB1 antibody detects endogenous levels of total PKCB1 protein.
Protein Families:	Druggable Genome, Transcription Factors



[View online »](#)

Product images:



Western blot analysis of extracts from 293 cells, using PKCB1 antibody. The lane on the right is treated with the synthesized peptide.