

## Product datasheet for **TA315256**

### EDG7 (LPAR3) Rabbit Polyclonal Antibody

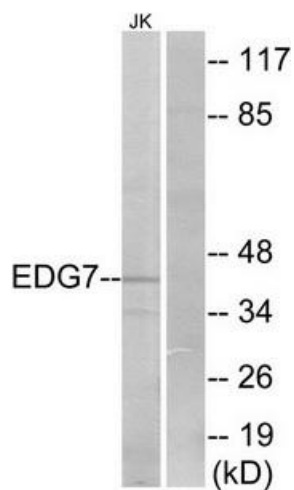
#### Product data:

Product Type:	Primary Antibodies
Applications:	IF, WB
Recommended Dilution:	WB: 1:500~1:3000, IF: 1:100~1:500, ELISA: 1:20000
Reactivity:	Human, Mouse, Rat
Host:	Rabbit
Isotype:	IgG
Clonality:	Polyclonal
Immunogen:	The antiserum was produced against synthesized peptide derived from internal of human EDG7.
Formulation:	Phosphate buffered saline (without Mg <sup>2+</sup> and Ca <sup>2+</sup> ), pH 7.4, 150mM NaCl, 0.02% sodium azide and 50% glycerol.
Purification:	The antibody was affinity-purified from rabbit antiserum by affinity-chromatography using epitope-specific immunogen.
Conjugation:	Unconjugated
Storage:	Store at -20°C as received.
Stability:	Stable for 12 months from date of receipt.
Gene Name:	lysophosphatidic acid receptor 3
Database Link:	<a href="#">NP_036284</a> <a href="#">Entrez Gene 65086 Mouse</a> <a href="#">Entrez Gene 66025 Rat</a> <a href="#">Entrez Gene 23566 Human</a> <a href="#">Q9UBY5</a>
Synonyms:	Edg-7; EDG7; GPCR; HOFNH30; LP-A3; LPA3; RP4-67813
Note:	EDG7 antibody detects endogenous levels of total EDG7 protein.
Protein Families:	Druggable Genome, GPCR, Transmembrane
Protein Pathways:	Neuroactive ligand-receptor interaction

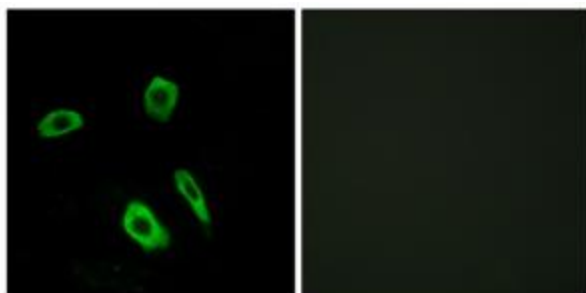


[View online »](#)

## Product images:



Western blot analysis of extracts from Jurkat cells, using EDG7 antibody. The lane on the right is treated with the synthesized peptide.



Immunofluorescence analysis of LOVO cells, using EDG7 antibody. The picture on the right is treated with the synthesized peptide.