

Product datasheet for **TA315253**

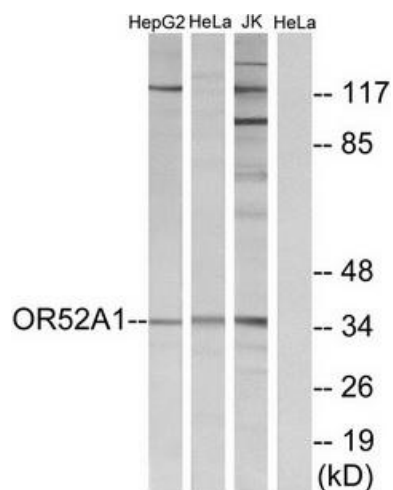
OR52A1 Rabbit Polyclonal Antibody

Product data:

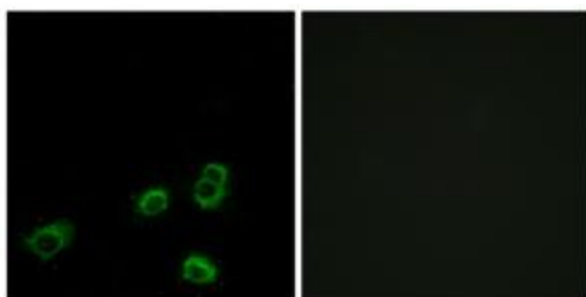
Product Type:	Primary Antibodies
Applications:	IF, WB
Recommended Dilution:	WB: 1:500~1:3000, IF: 1:100~1:500, ELISA: 1:10000
Reactivity:	Human
Host:	Rabbit
Isotype:	IgG
Clonality:	Polyclonal
Immunogen:	The antiserum was produced against synthesized peptide derived from internal of human OR52A1.
Formulation:	Phosphate buffered saline (without Mg ²⁺ and Ca ²⁺), pH 7.4, 150mM NaCl, 0.02% sodium azide and 50% glycerol.
Concentration:	lot specific
Purification:	The antibody was affinity-purified from rabbit antiserum by affinity-chromatography using epitope-specific immunogen.
Conjugation:	Unconjugated
Storage:	Store at -20°C as received.
Stability:	Stable for 12 months from date of receipt.
Gene Name:	olfactory receptor family 52 subfamily A member 1
Database Link:	NP_036507 Entrez Gene 23538 Human Q9UKL2
Synonyms:	HPFH1OR
Note:	OR52A1 antibody detects endogenous levels of total OR52A1 protein.
Protein Families:	Druggable Genome, Transmembrane
Protein Pathways:	Olfactory transduction



[View online »](#)

Product images:


Western blot analysis of extracts from HepG2 cells, HeLa cells and Jurkat cells, using OR52A1 antibody. The lane on the right is treated with the synthesized peptide.



Immunofluorescence analysis of MCF-7 cells, using OR52A1 antibody. The picture on the right is treated with the synthesized peptide.