

Product datasheet for **TA315251**

HEY2 Rabbit Polyclonal Antibody

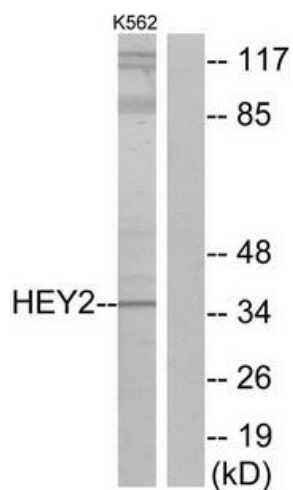
Product data:

Product Type:	Primary Antibodies
Applications:	WB
Recommended Dilution:	WB: 1:500~1:3000, ELISA: 1:1000
Reactivity:	Human, Mouse
Host:	Rabbit
Isotype:	IgG
Clonality:	Polyclonal
Immunogen:	The antiserum was produced against synthesized peptide derived from internal of human HEY2.
Formulation:	Phosphate buffered saline (without Mg ²⁺ and Ca ²⁺), pH 7.4, 150mM NaCl, 0.02% sodium azide and 50% glycerol.
Concentration:	lot specific
Purification:	The antibody was affinity-purified from rabbit antiserum by affinity-chromatography using epitope-specific immunogen.
Conjugation:	Unconjugated
Storage:	Store at -20°C as received.
Stability:	Stable for 12 months from date of receipt.
Gene Name:	hes related family bHLH transcription factor with YRPW motif 2
Database Link:	NP_036391 Entrez Gene 15214 Mouse Entrez Gene 23493 Human Q9UBP5
Synonyms:	bHLHb32; CHF1; GRIDLOCK; GRL; HERP1; HESR2; HRT2
Note:	HEY2 antibody detects endogenous levels of total HEY2 protein.
Protein Families:	Druggable Genome, Transcription Factors



[View online »](#)

Product images:



Western blot analysis of extracts from K562 cells, using HEY2 antibody. The lane on the right is treated with the synthesized peptide.