

Product datasheet for **TA315249**

CBX6 Rabbit Polyclonal Antibody

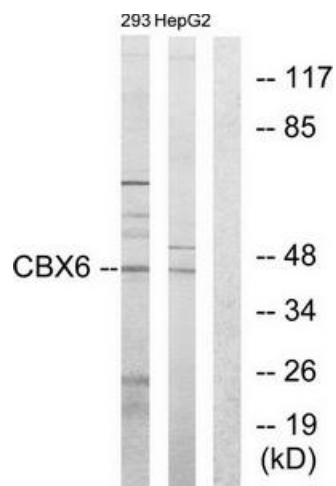
Product data:

| | |
|-----------------------|--|
| Product Type: | Primary Antibodies |
| Applications: | WB |
| Recommended Dilution: | WB: 1:500~1:3000, ELISA: 1:20000 |
| Reactivity: | Human, Mouse, Rat |
| Host: | Rabbit |
| Isotype: | IgG |
| Clonality: | Polyclonal |
| Immunogen: | The antiserum was produced against synthesized peptide derived from internal of human CBX6. |
| Formulation: | Phosphate buffered saline (without Mg ²⁺ and Ca ²⁺), pH 7.4, 150mM NaCl, 0.02% sodium azide and 50% glycerol. |
| Concentration: | lot specific |
| Purification: | The antibody was affinity-purified from rabbit antiserum by affinity-chromatography using epitope-specific immunogen. |
| Conjugation: | Unconjugated |
| Storage: | Store at -20°C as received. |
| Stability: | Stable for 12 months from date of receipt. |
| Gene Name: | chromobox 6 |
| Database Link: | NP_055107 Entrez Gene 315136 RatEntrez Gene 494448 MouseEntrez Gene 23466 Human O95503 |
| Synonyms: | chromobox homolog 6; OTTHUMP00000028667 |
| Note: | CBX6 antibody detects endogenous levels of total CBX6 protein. |
| Protein Families: | Transcription Factors |



[View online »](#)

Product images:



Western blot analysis of extracts from 293 cells and HepG2 cells, using CBX6 antibody. The lane on the right is treated with the synthesized peptide.