

Product datasheet for **TA315247**

SLC44A1 Rabbit Polyclonal Antibody

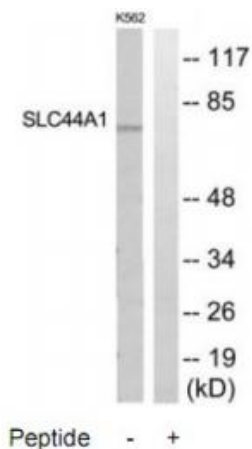
Product data:

Product Type:	Primary Antibodies
Applications:	WB
Recommended Dilution:	WB: 1:500~1:3000, ELISA: 1:40000
Reactivity:	Mouse, Human, Rat
Host:	Rabbit
Isotype:	IgG
Clonality:	Polyclonal
Immunogen:	The antiserum was produced against synthesized peptide derived from internal of human SLC44A1.
Formulation:	Phosphate buffered saline (without Mg ²⁺ and Ca ²⁺), pH 7.4, 150mM NaCl, 0.02% sodium azide and 50% glycerol.
Concentration:	lot specific
Purification:	The antibody was affinity-purified from rabbit antiserum by affinity-chromatography using epitope-specific immunogen.
Conjugation:	Unconjugated
Storage:	Store at -20°C as received.
Stability:	Stable for 12 months from date of receipt.
Gene Name:	solute carrier family 44 member 1
Database Link:	NP_071392 Entrez Gene 85254 Rat Entrez Gene 100434 Mouse Entrez Gene 23446 Human Q8WWI5
Synonyms:	CD92; CD92 protein; CDW92; CDW92 antigen; choline transporter-like protein 1; CHTL1; CTL1; member 1; OTTHUMP00000021838; RP11-287A8.1; solute carrier family 44
Note:	SLC44A1 antibody detects endogenous levels of total SLC44A1 protein.
Protein Families:	Transmembrane



[View online »](#)

Product images:



Western blot analysis of extracts from K562 cells, using SLC44A1 antibody. The lane on the right is treated with the synthesized peptide.

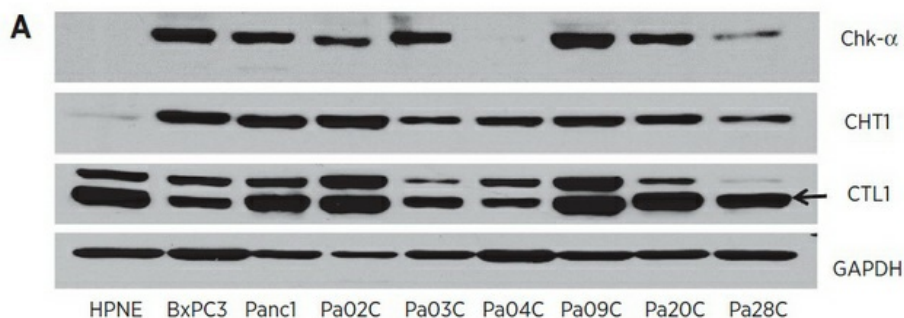


Figure from citation: Western blot analysis of CTL1 (also known as SLC44A1) protein level by using anti-SLC44A1 antibody in pancreatic cell lines. Dilution: 1:1000 [View Citation](#)