

## Product datasheet for **TA315241**

### LARG (ARHGEF12) Rabbit Polyclonal Antibody

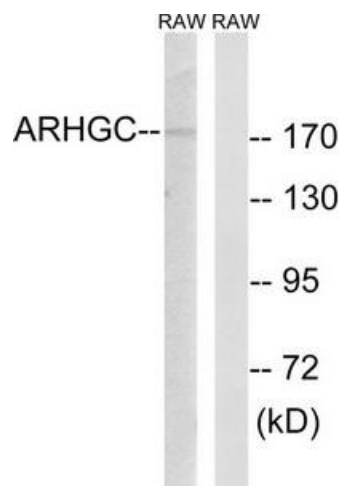
#### Product data:

Product Type:	Primary Antibodies
Applications:	WB
Recommended Dilution:	WB: 1:500~1:3000, ELISA: 1:20000
Reactivity:	Human, Mouse, Rat
Host:	Rabbit
Isotype:	IgG
Clonality:	Polyclonal
Immunogen:	The antiserum was produced against synthesized peptide derived from internal of human ARHGEF12.
Formulation:	Phosphate buffered saline (without Mg <sup>2+</sup> and Ca <sup>2+</sup> ), pH 7.4, 150mM NaCl, 0.02% sodium azide and 50% glycerol.
Concentration:	lot specific
Purification:	The antibody was affinity-purified from rabbit antiserum by affinity-chromatography using epitope-specific immunogen.
Conjugation:	Unconjugated
Storage:	Store at -20°C as received.
Stability:	Stable for 12 months from date of receipt.
Gene Name:	Rho guanine nucleotide exchange factor 12
Database Link:	<a href="#">NP_001185594</a> <a href="#">Entrez Gene 69632 MouseEntrez Gene 367072 RatEntrez Gene 23365 Human Q9NZN5</a>
Synonyms:	LARG; PRO2792
Note:	ARHGEF12 antibody detects endogenous levels of total ARHGEF12 protein.
Protein Pathways:	Axon guidance, Regulation of actin cytoskeleton, Vascular smooth muscle contraction



[View online »](#)

## Product images:



Western blot analysis of extracts from RAW264.7 cells, using ARHGEF12 antibody. The lane on the right is treated with the synthesized peptide.