

## Product datasheet for **TA315238**

### SIN3B Rabbit Polyclonal Antibody

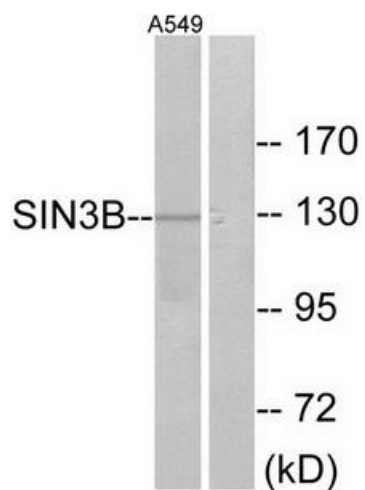
#### Product data:

Product Type:	Primary Antibodies
Applications:	IF, WB
Recommended Dilution:	WB: 1:500~1:3000, IF: 1:100~1:500, ELISA: 1:1000
Reactivity:	Human
Host:	Rabbit
Isotype:	IgG
Clonality:	Polyclonal
Immunogen:	The antiserum was produced against synthesized peptide derived from internal of human SIN3B.
Formulation:	Phosphate buffered saline (without Mg <sup>2+</sup> and Ca <sup>2+</sup> ), pH 7.4, 150mM NaCl, 0.02% sodium azide and 50% glycerol.
Concentration:	lot specific
Purification:	The antibody was affinity-purified from rabbit antiserum by affinity-chromatography using epitope-specific immunogen.
Conjugation:	Unconjugated
Storage:	Store at -20°C as received.
Stability:	Stable for 12 months from date of receipt.
Gene Name:	SIN3 transcription regulator family member B
Database Link:	<a href="#">NP_056075</a> <a href="#">Entrez Gene 23309 Human</a> <a href="#">O75182</a>
Synonyms:	KIAA0700
Note:	SIN3B antibody detects endogenous levels of total SIN3B protein.

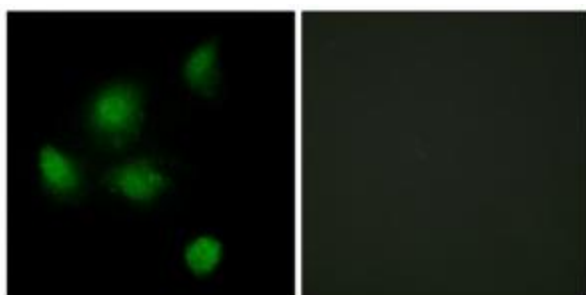


[View online »](#)

## Product images:



Western blot analysis of extracts from A549 cells, using SIN3B antibody. The lane on the right is treated with the synthesized peptide.



Immunofluorescence analysis of HeLa cells, using SIN3B antibody. The picture on the right is treated with the synthesized peptide.