

Product datasheet for **TA315237**

ACSL6 Rabbit Polyclonal Antibody

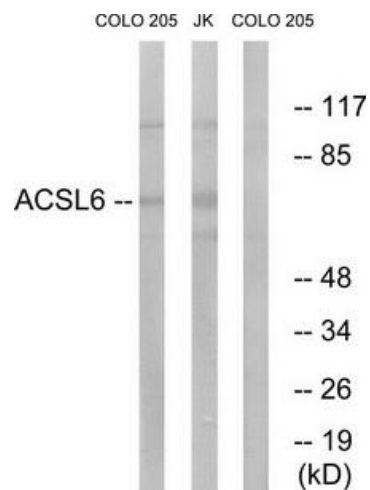
Product data:

Product Type:	Primary Antibodies
Applications:	WB
Recommended Dilution:	WB: 1:500~1:3000, ELISA: 1:40000
Reactivity:	Human, Mouse
Host:	Rabbit
Isotype:	IgG
Clonality:	Polyclonal
Immunogen:	The antiserum was produced against synthesized peptide derived from internal of human ACSL6.
Formulation:	Phosphate buffered saline (without Mg ²⁺ and Ca ²⁺), pH 7.4, 150mM NaCl, 0.02% sodium azide and 50% glycerol.
Concentration:	lot specific
Purification:	The antibody was affinity-purified from rabbit antiserum by affinity-chromatography using epitope-specific immunogen.
Conjugation:	Unconjugated
Storage:	Store at -20°C as received.
Stability:	Stable for 12 months from date of receipt.
Gene Name:	acyl-CoA synthetase long-chain family member 6
Database Link:	NP_001009185 Entrez Gene 216739 Mouse Entrez Gene 23305 Human Q9UKU0
Synonyms:	ACS2; FACL6; LACS2; LACS5; LACS 6
Note:	ACSL6 antibody detects endogenous levels of total ACSL6 protein.
Protein Families:	Druggable Genome, Transmembrane
Protein Pathways:	Adipocytokine signaling pathway, Fatty acid metabolism, Metabolic pathways, PPAR signaling pathway



[View online »](#)

Product images:



Western blot analysis of extracts from COLO cells and Jurkat cells, using ACSL6 antibody. The lane on the right is treated with the synthesized peptide.