

Product datasheet for **TA315234**

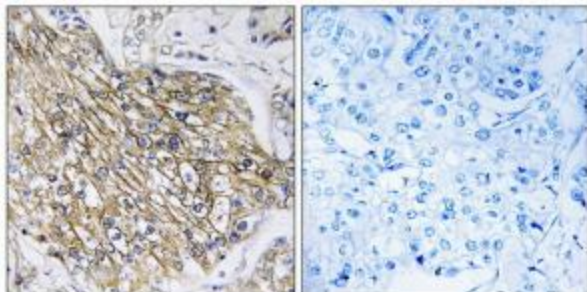
LPHN2 (ADGRL2) Rabbit Polyclonal Antibody

Product data:

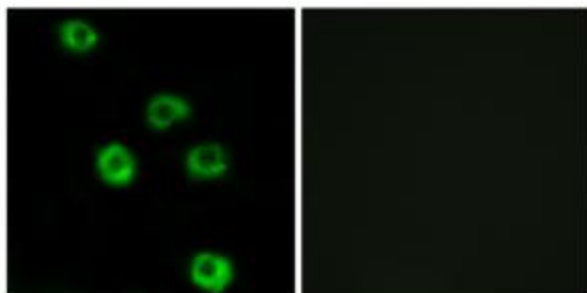
Product Type:	Primary Antibodies
Applications:	IF, IHC
Recommended Dilution:	IHC: 1:50~1:100, IF: 1:100~1:500, ELISA: 1:1000
Reactivity:	Human, Mouse, Rat
Host:	Rabbit
Isotype:	IgG
Clonality:	Polyclonal
Immunogen:	The antiserum was produced against synthesized peptide derived from internal of human LPHN2.
Formulation:	Phosphate buffered saline (without Mg ²⁺ and Ca ²⁺), pH 7.4, 150mM NaCl, 0.02% sodium azide and 50% glycerol.
Concentration:	lot specific
Purification:	The antibody was affinity-purified from rabbit antiserum by affinity-chromatography using epitope-specific immunogen.
Conjugation:	Unconjugated
Storage:	Store at -20°C as received.
Stability:	Stable for 12 months from date of receipt.
Gene Name:	adhesion G protein-coupled receptor L2
Database Link:	NP_036434 Entrez Gene 99633 MouseEntrez Gene 171447 RatEntrez Gene 23266 Human O95490
Synonyms:	CIRL2; CL2; LEC1; LPHH1; LPHN2
Note:	LPHN2 antibody detects endogenous levels of total LPHN2 protein.
Protein Families:	Druggable Genome, GPCR, Transmembrane



[View online »](#)

Product images:

Immunohistochemistry analysis of paraffin-embedded human breast carcinoma tissue using LPHN2 antibody. The picture on the right is treated with the synthesized peptide.



Immunofluorescence analysis of COS-7 cells, using LPHN2 antibody. The picture on the right is treated with the synthesized peptide.