

Product datasheet for **TA315232**

SCFD1 Rabbit Polyclonal Antibody

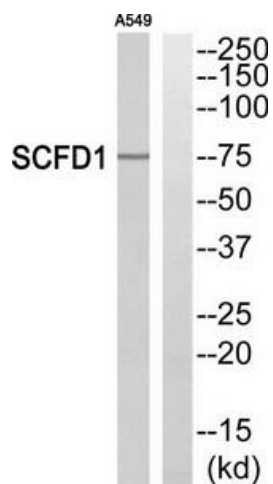
Product data:

Product Type:	Primary Antibodies
Applications:	WB
Recommended Dilution:	WB: 1:500~1:3000, ELISA: 1:10000
Reactivity:	Human, Mouse, Rat
Host:	Rabbit
Isotype:	IgG
Clonality:	Polyclonal
Immunogen:	The antiserum was produced against synthesized peptide derived from C-terminal of human SCFD1.
Formulation:	Phosphate buffered saline (without Mg ²⁺ and Ca ²⁺), pH 7.4, 150mM NaCl, 0.02% sodium azide and 50% glycerol.
Concentration:	lot specific
Purification:	The antibody was affinity-purified from rabbit antiserum by affinity-chromatography using epitope-specific immunogen.
Conjugation:	Unconjugated
Storage:	Store at -20°C as received.
Stability:	Stable for 12 months from date of receipt.
Gene Name:	sec1 family domain containing 1
Database Link:	NP_001244305 Entrez Gene 54350 Rat Entrez Gene 76983 Mouse Entrez Gene 23256 Human Q8WVM8
Synonyms:	C14orf163; RA410; SLY1; SLY1P; STXBP1L2
Note:	SCFD1 antibody detects endogenous levels of total SCFD1 protein.



[View online »](#)

Product images:



Western blot analysis of extracts from A549 cells, using SCFD1 antibody. The lane on the right is treated with the synthesized peptide.