

## Product datasheet for **TA315228**

### **SYT11 Rabbit Polyclonal Antibody**

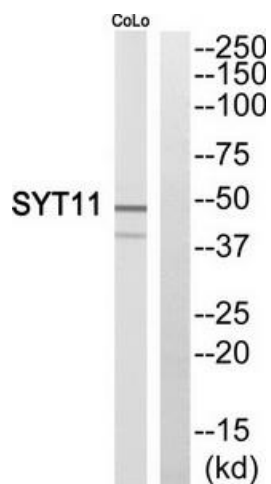
#### **Product data:**

|                              |   |
|------------------------------|---|
| <b>Product Type:</b>         | Primary Antibodies  |
| <b>Applications:</b>         | WB  |
| <b>Recommended Dilution:</b> | WB: 1:500~1:3000, ELISA: 1:10000  |
| <b>Reactivity:</b>           | Human, Mouse, Rat   |
| <b>Host:</b>                 | Rabbit  |
| <b>Isotype:</b>              | IgG   |
| <b>Clonality:</b>            | Polyclonal  |
| <b>Immunogen:</b>            | The antiserum was produced against synthesized peptide derived from internal of human SYT11.  |
| <b>Formulation:</b>          | Phosphate buffered saline (without Mg <sup>2+</sup> and Ca <sup>2+</sup> ), pH 7.4, 150mM NaCl, 0.02% sodium azide and 50% glycerol.  |
| <b>Concentration:</b>        | lot specific  |
| <b>Purification:</b>         | The antibody was affinity-purified from rabbit antiserum by affinity-chromatography using epitope-specific immunogen.   |
| <b>Conjugation:</b>          | Unconjugated  |
| <b>Storage:</b>              | Store at -20°C as received.   |
| <b>Stability:</b>            | Stable for 12 months from date of receipt.  |
| <b>Gene Name:</b>            | synaptotagmin 11  |
| <b>Database Link:</b>        | <a href="#">NP_689493</a><br><a href="#">Entrez Gene 60568 Rat</a> <a href="#">Entrez Gene 229521 Mouse</a> <a href="#">Entrez Gene 23208 Human</a><br><a href="#">Q9BT88</a> |
| <b>Synonyms:</b>             | SYT12; sytXI  |
| <b>Note:</b>                 | SYT11 antibody detects endogenous levels of total SYT11 protein.  |
| <b>Protein Families:</b>     | Transmembrane   |



[View online »](#)

## Product images:



Western blot analysis of extracts from COLO205 cells, using SYT11 antibody. The lane on the right is treated with the synthesized peptide.