

Product datasheet for **TA315223**

JIP3 (MAPK8IP3) Rabbit Polyclonal Antibody

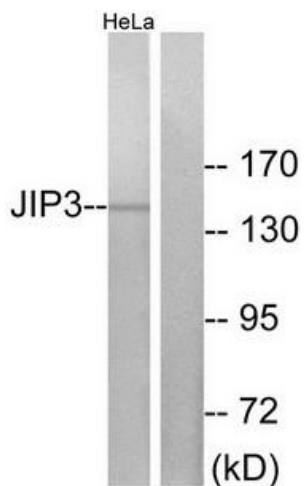
Product data:

Product Type:	Primary Antibodies
Applications:	IF, WB
Recommended Dilution:	WB: 1:500~1:3000, IF: 1:100~1:500, ELISA: 1:20000
Reactivity:	Human, Mouse
Host:	Rabbit
Isotype:	IgG
Clonality:	Polyclonal
Immunogen:	The antiserum was produced against synthesized peptide derived from internal of human JIP3.
Formulation:	Phosphate buffered saline (without Mg ²⁺ and Ca ²⁺), pH 7.4, 150mM NaCl, 0.02% sodium azide and 50% glycerol.
Concentration:	lot specific
Purification:	The antibody was affinity-purified from rabbit antiserum by affinity-chromatography using epitope-specific immunogen.
Conjugation:	Unconjugated
Storage:	Store at -20°C as received.
Stability:	Stable for 12 months from date of receipt.
Gene Name:	mitogen-activated protein kinase 8 interacting protein 3
Database Link:	NP_001035529 Entrez Gene 30957 Mouse Entrez Gene 23162 Human Q9UPT6
Synonyms:	JIP-3; JIP3; JSAP1; syd; SYD2
Note:	JIP3 antibody detects endogenous levels of total JIP3 protein.
Protein Families:	Druggable Genome
Protein Pathways:	MAPK signaling pathway

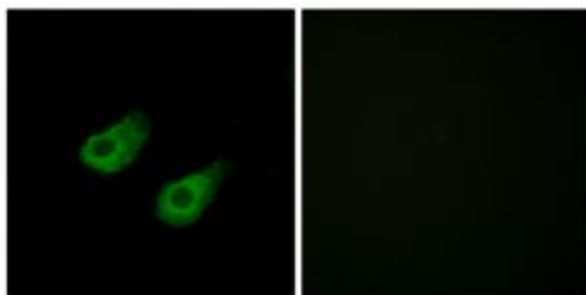


[View online »](#)

Product images:



Western blot analysis of extracts from HeLa cells, using JIP3 antibody. The lane on the right is treated with the synthesized peptide.



Immunofluorescence analysis of HeLa cells, using JIP3 antibody. The picture on the right is treated with the synthesized peptide.