

Product datasheet for **TA315215**

MAST3 Rabbit Polyclonal Antibody

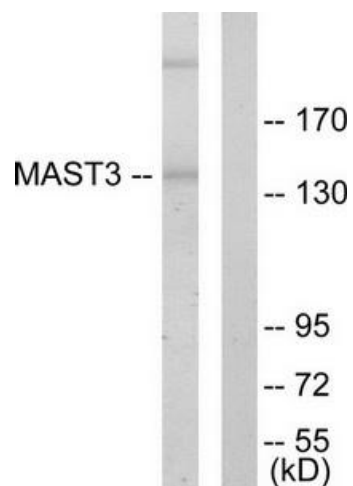
Product data:

Product Type:	Primary Antibodies
Applications:	WB
Recommended Dilution:	WB: 1:500~1:3000, ELISA: 1:10000
Reactivity:	Human, Mouse
Host:	Rabbit
Isotype:	IgG
Clonality:	Polyclonal
Immunogen:	The antiserum was produced against synthesized peptide derived from internal of human MAST3.
Formulation:	Phosphate buffered saline (without Mg ²⁺ and Ca ²⁺), pH 7.4, 150mM NaCl, 0.02% sodium azide and 50% glycerol.
Concentration:	lot specific
Purification:	The antibody was affinity-purified from rabbit antiserum by affinity-chromatography using epitope-specific immunogen.
Conjugation:	Unconjugated
Storage:	Store at -20°C as received.
Stability:	Stable for 12 months from date of receipt.
Gene Name:	microtubule associated serine/threonine kinase 3
Database Link:	NP_055831 Entrez Gene 546071 Mouse Entrez Gene 23031 Human O60307
Synonyms:	KIAA0561
Note:	MAST3 antibody detects endogenous levels of total MAST3 protein.
Protein Families:	Druggable Genome, Protein Kinase



[View online »](#)

Product images:



Western blot analysis of extracts from Jurkat cells, using MAST3 antibody. The lane on the right is treated with the synthesized peptide.