

Product datasheet for **TA315214**

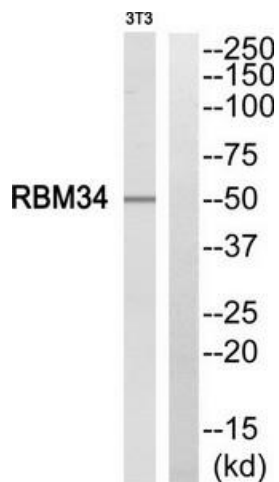
RBM34 Rabbit Polyclonal Antibody

Product data:

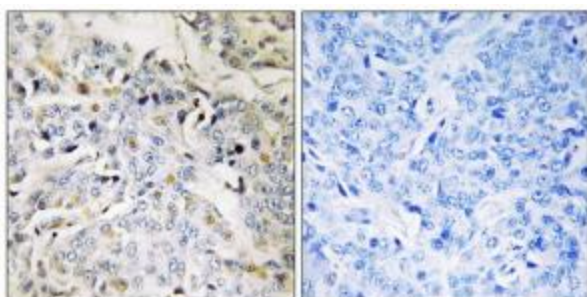
Product Type:	Primary Antibodies
Applications:	IHC, WB
Recommended Dilution:	WB: 1:500~1:3000, IHC: 1:50~1:100, ELISA: 1:20000
Reactivity:	Human, Mouse, Rat
Host:	Rabbit
Isotype:	IgG
Clonality:	Polyclonal
Immunogen:	The antiserum was produced against synthesized peptide derived from C-terminal of human RBM34.
Formulation:	Phosphate buffered saline (without Mg ²⁺ and Ca ²⁺), pH 7.4, 150mM NaCl, 0.02% sodium azide and 50% glycerol.
Concentration:	lot specific
Purification:	The antibody was affinity-purified from rabbit antiserum by affinity-chromatography using epitope-specific immunogen.
Conjugation:	Unconjugated
Storage:	Store at -20°C as received.
Stability:	Stable for 12 months from date of receipt.
Gene Name:	RNA binding motif protein 34
Database Link:	NP_001155005 Entrez Gene 52202 MouseEntrez Gene 307956 RatEntrez Gene 23029 Human P42696
Synonyms:	KIAA0117
Note:	RBM34 antibody detects endogenous levels of total RBM34 protein.



[View online »](#)

Product images:

Western blot analysis of extracts from NIH/3T3 cells, using RBM34 antibody. The lane on the right is treated with the synthesized peptide.



Immunohistochemistry analysis of paraffin-embedded human breast carcinoma tissue using RBM34 antibody. The picture on the right is treated with the synthesized peptide.