

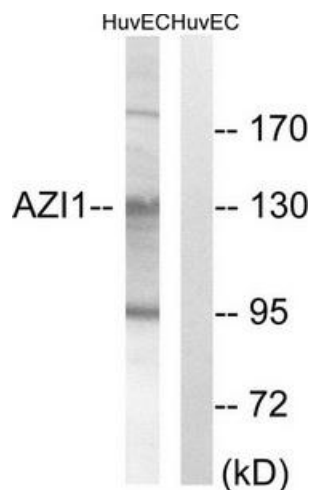
Product datasheet for **TA315211**

AZI1 (CEP131) Rabbit Polyclonal Antibody

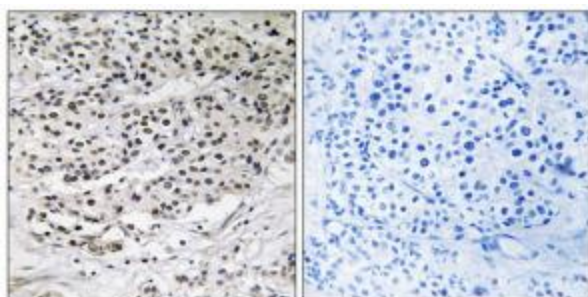
Product data:

Product Type:	Primary Antibodies
Applications:	IHC, WB
Recommended Dilution:	WB: 1:500~1:3000, IHC: 1:50~1:100, ELISA: 1:40000
Reactivity:	Human, Mouse, Rat
Host:	Rabbit
Isotype:	IgG
Clonality:	Polyclonal
Immunogen:	The antiserum was produced against synthesized peptide derived from internal of human AZI1.
Formulation:	Phosphate buffered saline (without Mg ²⁺ and Ca ²⁺), pH 7.4, 150mM NaCl, 0.02% sodium azide and 50% glycerol.
Concentration:	lot specific
Purification:	The antibody was affinity-purified from rabbit antiserum by affinity-chromatography using epitope-specific immunogen.
Conjugation:	Unconjugated
Storage:	Store at -20°C as received.
Stability:	Stable for 12 months from date of receipt.
Gene Name:	centrosomal protein 131
Database Link:	NP_001009811 Entrez Gene 12009 MouseEntrez Gene 360672 RatEntrez Gene 22994 Human Q9UPN4
Synonyms:	AZ1; AZI1; ZA1
Note:	AZI1 antibody detects endogenous levels of total AZI1 protein.


[View online »](#)

Product images:


Western blot analysis of extracts from HUVEC cells, using AZI1 antibody. The lane on the right is treated with the synthesized peptide.



Immunohistochemistry analysis of paraffin-embedded human breast carcinoma tissue using AZI1 antibody. The picture on the right is treated with the synthesized peptide.