

Product datasheet for **TA315208**

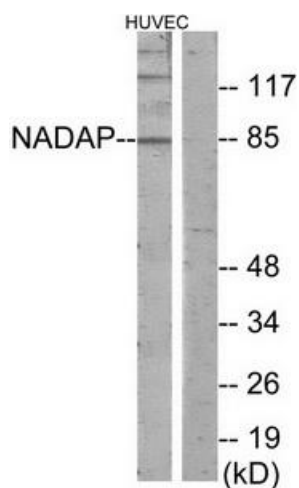
Kanadaptin (SLC4A1AP) Rabbit Polyclonal Antibody

Product data:

| | |
|-----------------------|--|
| Product Type: | Primary Antibodies |
| Applications: | WB |
| Recommended Dilution: | WB: 1:500~1:3000, ELISA: 1:1000 |
| Reactivity: | Human, Mouse |
| Host: | Rabbit |
| Isotype: | IgG |
| Clonality: | Polyclonal |
| Immunogen: | The antiserum was produced against synthesized peptide derived from internal of human NADAP. |
| Formulation: | Phosphate buffered saline (without Mg ²⁺ and Ca ²⁺), pH 7.4, 150mM NaCl, 0.02% sodium azide and 50% glycerol. |
| Concentration: | lot specific |
| Purification: | The antibody was affinity-purified from rabbit antiserum by affinity-chromatography using epitope-specific immunogen. |
| Conjugation: | Unconjugated |
| Storage: | Store at -20°C as received. |
| Stability: | Stable for 12 months from date of receipt. |
| Gene Name: | solute carrier family 4 member 1 adaptor protein |
| Database Link: | NP_060628 Entrez Gene 20534 Mouse Entrez Gene 22950 Human Q9BWU0 |
| Synonyms: | HLC3 |
| Note: | NADAP antibody detects endogenous levels of total NADAP protein. |

[View online »](#)

Product images:



Western blot analysis of extracts from HUVEC cells, using NADAP antibody. The lane on the right is treated with the synthesized peptide.