

Product datasheet for **TA315203**

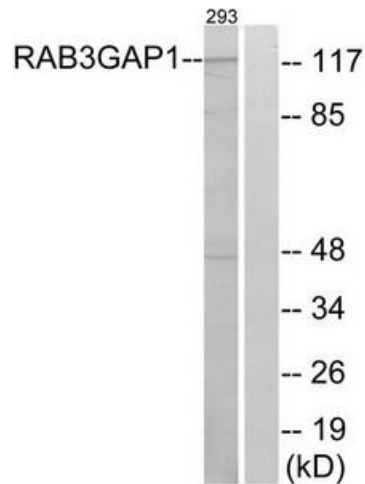
RAB3GAP1 Rabbit Polyclonal Antibody

Product data:

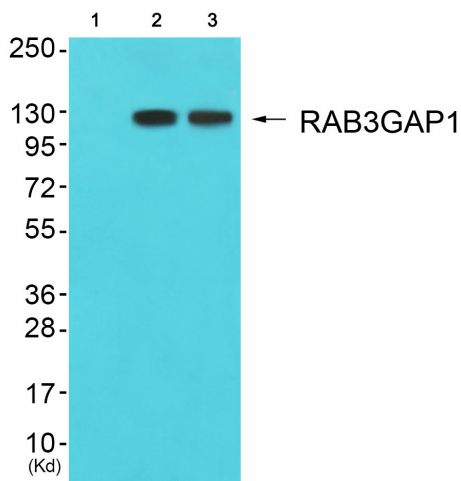
Product Type:	Primary Antibodies
Applications:	IHC, WB
Recommended Dilution:	WB: 1:500~1:3000, IHC: 1:50~1:100, ELISA: 1:40000
Reactivity:	Human
Host:	Rabbit
Isotype:	IgG
Clonality:	Polyclonal
Immunogen:	The antiserum was produced against synthesized peptide derived from internal of human RAB3GAP1.
Formulation:	Phosphate buffered saline (without Mg ²⁺ and Ca ²⁺), pH 7.4, 150mM NaCl, 0.02% sodium azide and 50% glycerol.
Concentration:	lot specific
Purification:	The antibody was affinity-purified from rabbit antiserum by affinity-chromatography using epitope-specific immunogen.
Conjugation:	Unconjugated
Storage:	Store at -20°C as received.
Stability:	Stable for 12 months from date of receipt.
Gene Name:	RAB3 GTPase activating protein catalytic subunit 1
Database Link:	NP_001165906 Entrez Gene 22930 Human Q15042
Synonyms:	P130; RAB3GAP; RAB3GAP130; WARBM1
Note:	RAB3GAP1 antibody detects endogenous levels of total RAB3GAP1 protein.



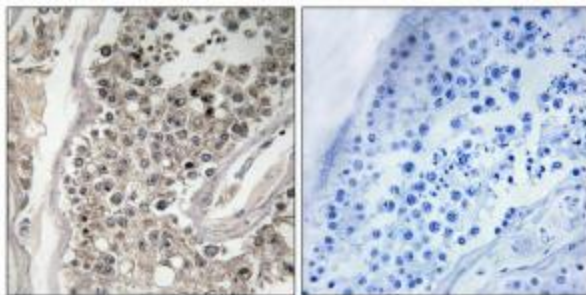
[View online »](#)

Product images:


Western blot analysis of extracts from 293 cells, using RAB3GAP1 antibody. The lane on the right is treated with the synthesized peptide.



Western blot analysis of extracts from JK cells (Lane 2) and 293 cells (Lane 3), using RAB3GAP1 Antibody. The lane on the left is treated with synthesized peptide.



Immunohistochemistry analysis of paraffin-embedded human testis tissue using RAB3GAP1 antibody. The picture on the right is treated with the synthesized peptide.