

Product datasheet for **TA315200**

RALY Rabbit Polyclonal Antibody

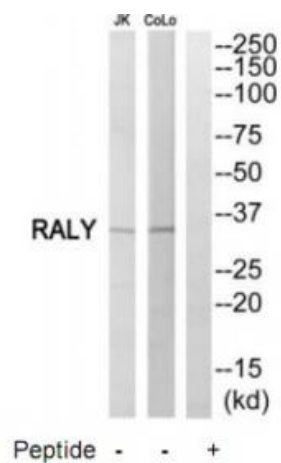
Product data:

Product Type:	Primary Antibodies
Applications:	WB
Recommended Dilution:	WB: 1:500~1:3000, ELISA: 1:10000
Reactivity:	Human, Mouse, Rat
Host:	Rabbit
Isotype:	IgG
Clonality:	Polyclonal
Immunogen:	The antiserum was produced against synthesized peptide derived from internal of human RALY.
Formulation:	Phosphate buffered saline (without Mg ²⁺ and Ca ²⁺), pH 7.4, 150mM NaCl, 0.02% sodium azide and 50% glycerol.
Concentration:	lot specific
Purification:	The antibody was affinity-purified from rabbit antiserum by affinity-chromatography using epitope-specific immunogen.
Conjugation:	Unconjugated
Storage:	Store at -20°C as received.
Stability:	Stable for 12 months from date of receipt.
Gene Name:	RALY heterogeneous nuclear ribonucleoprotein
Database Link:	NP_031393 Entrez Gene 19383 MouseEntrez Gene 296301 RatEntrez Gene 22913 Human Q9UKM9
Synonyms:	HNRPCL2; P542
Note:	RALY antibody detects endogenous levels of total RALY protein.



[View online »](#)

Product images:



Western blot analysis of extracts from Jurkat cells and COLO205 cells, using RALY antibody. The lane on the right is treated with the synthesized peptide.