

Product datasheet for **TA315195**

CNKSR2 Rabbit Polyclonal Antibody

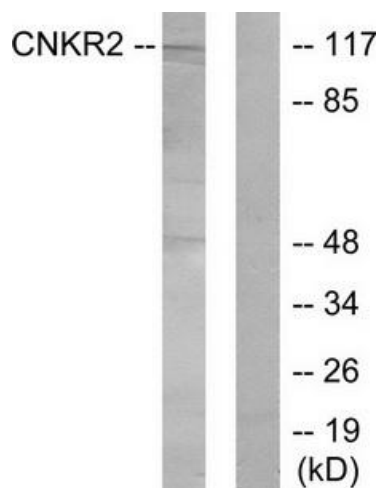
Product data:

Product Type:	Primary Antibodies
Applications:	WB
Recommended Dilution:	WB: 1:500~1:3000, ELISA: 1:20000
Reactivity:	Human, Mouse, Rat
Host:	Rabbit
Isotype:	IgG
Clonality:	Polyclonal
Immunogen:	The antiserum was produced against synthesized peptide derived from internal of human CNKR2.
Formulation:	Phosphate buffered saline (without Mg ²⁺ and Ca ²⁺), pH 7.4, 150mM NaCl, 0.02% sodium azide and 50% glycerol.
Concentration:	lot specific
Purification:	The antibody was affinity-purified from rabbit antiserum by affinity-chromatography using epitope-specific immunogen.
Conjugation:	Unconjugated
Storage:	Store at -20°C as received.
Stability:	Stable for 12 months from date of receipt.
Gene Name:	connector enhancer of kinase suppressor of Ras 2
Database Link:	NP_001162118 Entrez Gene 59322 Rat Entrez Gene 245684 Mouse Entrez Gene 22866 Human Q8WXI2
Synonyms:	CNK2; KSR2; MAGUIN
Note:	CNKR2 antibody detects endogenous levels of total CNKR2 protein.



[View online »](#)

Product images:



Western blot analysis of extracts from Jurkat cells, using CNKR2 antibody. The lane on the right is treated with the synthesized peptide.