

Product datasheet for **TA315194**

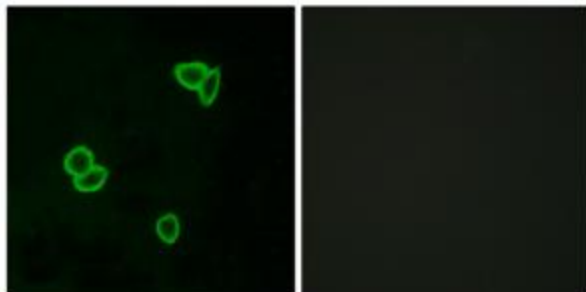
LPHN1 (ADGRL1) Rabbit Polyclonal Antibody

Product data:

Product Type:	Primary Antibodies
Applications:	IF
Recommended Dilution:	IF: 1:100~1:500, ELISA: 1:1000
Reactivity:	Human, Mouse, Rat
Host:	Rabbit
Isotype:	IgG
Clonality:	Polyclonal
Immunogen:	The antiserum was produced against synthesized peptide derived from internal of human LPHN1.
Formulation:	Phosphate buffered saline (without Mg ²⁺ and Ca ²⁺), pH 7.4, 150mM NaCl, 0.02% sodium azide and 50% glycerol.
Concentration:	lot specific
Purification:	The antibody was affinity-purified from rabbit antiserum by affinity-chromatography using epitope-specific immunogen.
Conjugation:	Unconjugated
Storage:	Store at -20°C as received.
Stability:	Stable for 12 months from date of receipt.
Gene Name:	adhesion G protein-coupled receptor L1
Database Link:	NP_055736 Entrez Gene 65096 Rat Entrez Gene 330814 Mouse Entrez Gene 22859 Human O94910
Synonyms:	CIRL1; CL1; LEC2; LPHN1
Note:	LPHN1 antibody detects endogenous levels of total LPHN1 protein.
Protein Families:	Druggable Genome, Transmembrane



[View online »](#)

Product images:

Immunofluorescence analysis of LOVO cells, using LPHN1 antibody. The picture on the right is treated with the synthesized peptide.