

Product datasheet for **TA315192**

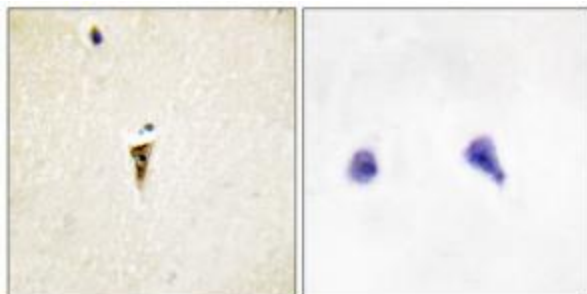
CILK1 Rabbit Polyclonal Antibody

Product data:

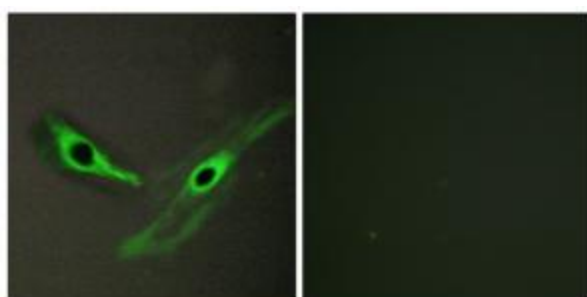
Product Type:	Primary Antibodies
Applications:	IF, IHC
Recommended Dilution:	IHC: 1:50~1:100, IF: 1:100~1:500, ELISA: 1:1000
Reactivity:	Human, Mouse, Rat
Host:	Rabbit
Isotype:	IgG
Clonality:	Polyclonal
Immunogen:	The antiserum was produced against synthesized peptide derived from internal of human ICK
Formulation:	Phosphate buffered saline (without Mg ²⁺ and Ca ²⁺), pH 7.4, 150mM NaCl, 0.02% sodium azide and 50% glycerol.
Concentration:	lot specific
Purification:	The antibody was affinity-purified from rabbit antiserum by affinity-chromatography using epitope-specific immunogen.
Conjugation:	Unconjugated
Storage:	Store at -20°C as received.
Stability:	Stable for 12 months from date of receipt.
Gene Name:	intestinal cell (MAK-like) kinase
Database Link:	NP_055735 Entrez Gene 56542 Mouse Entrez Gene 84411 Rat Entrez Gene 22858 Human Q9UPZ9
Synonyms:	ECO; LCK2; MRK
Note:	ICK antibody detects endogenous levels of total ICK protein.
Protein Families:	Druggable Genome, Protein Kinase



[View online »](#)

Product images:

Immunohistochemistry analysis of paraffin-embedded human brain tissue, using ICK antibody. The picture on the right is treated with the synthesized peptide.



Immunofluorescence analysis of HeLa cells, using ICK antibody. The picture on the right is treated with the synthesized peptide.