

Product datasheet for **TA315191**

CILK1 Rabbit Polyclonal Antibody

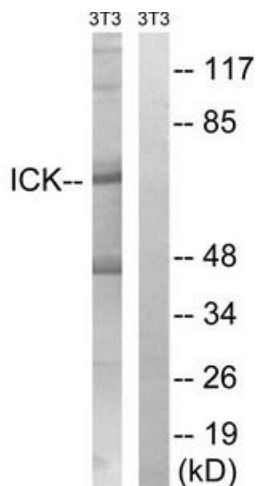
Product data:

Product Type:	Primary Antibodies
Applications:	WB
Recommended Dilution:	WB: 1:500~1:3000, ELISA: 1:20000
Reactivity:	Human, Mouse, Rat
Host:	Rabbit
Isotype:	IgG
Clonality:	Polyclonal
Immunogen:	The antiserum was produced against synthesized non-phosphopeptide derived from human ICK around the phosphorylation site of tyrosine 159 (T-D-YP-V-S).
Formulation:	Phosphate buffered saline (without Mg ²⁺ and Ca ²⁺), pH 7.4, 150mM NaCl, 0.02% sodium azide and 50% glycerol.
Concentration:	lot specific
Purification:	The antibody was affinity-purified from rabbit antiserum by affinity-chromatography using epitope-specific immunogen.
Conjugation:	Unconjugated
Storage:	Store at -20°C as received.
Stability:	Stable for 12 months from date of receipt.
Gene Name:	intestinal cell (MAK-like) kinase
Database Link:	NP_055735 Entrez Gene 56542 MouseEntrez Gene 84411 RatEntrez Gene 22858 Human Q9UPZ9
Synonyms:	ECO; LCK2; MRK
Note:	ICK (Ab-159) antibody detects endogenous levels of total ICK protein.
Protein Families:	Druggable Genome, Protein Kinase

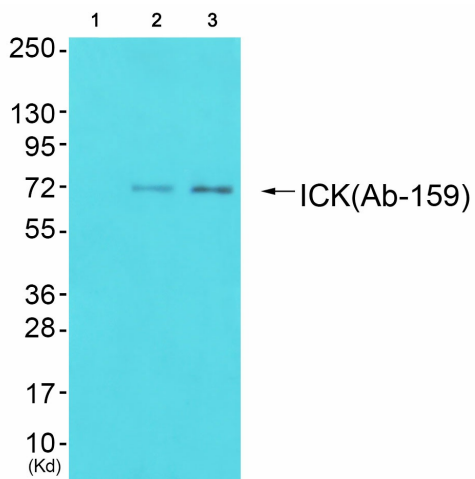


[View online »](#)

Product images:



Western blot analysis of extracts from 3T3 cells, treated with PBS (10uM, 60mins), using ICK (Ab-159) antibody. The lane on the right is treated with the synthesized peptide.



Western blot analysis of extracts from 293 cells (Lane 2) and cos-7 cells (Lane 3), using ICK (Ab-159) Antibody. The lane on the left is treated with synthesized peptide.