

Product datasheet for **TA315189**

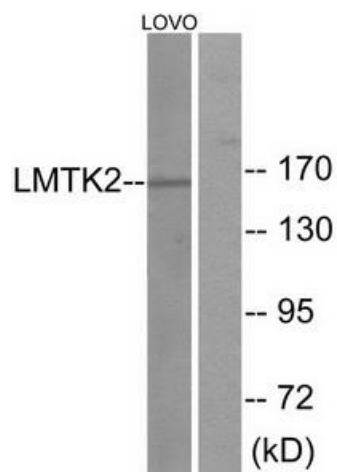
KPI2 (LMTK2) Rabbit Polyclonal Antibody

Product data:

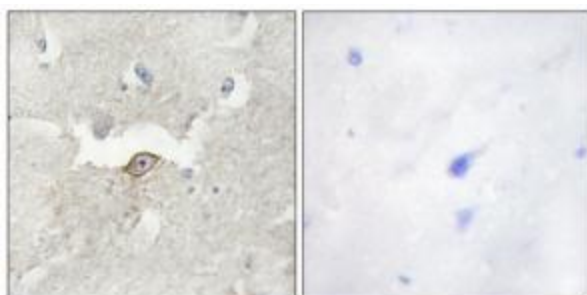
Product Type:	Primary Antibodies
Applications:	IF, IHC, WB
Recommended Dilution:	WB: 1:500~1:3000, IHC: 1:50~1:100, IF: 1:100~1:500, ELISA: 1:20000
Reactivity:	Human
Host:	Rabbit
Isotype:	IgG
Clonality:	Polyclonal
Immunogen:	The antiserum was produced against synthesized peptide derived from internal of human LMTK2.
Formulation:	Phosphate buffered saline (without Mg ²⁺ and Ca ²⁺), pH 7.4, 150mM NaCl, 0.02% sodium azide and 50% glycerol.
Concentration:	lot specific
Purification:	The antibody was affinity-purified from rabbit antiserum by affinity-chromatography using epitope-specific immunogen.
Conjugation:	Unconjugated
Storage:	Store at -20°C as received.
Stability:	Stable for 12 months from date of receipt.
Gene Name:	lemur tyrosine kinase 2
Database Link:	NP_055731 Entrez Gene 22853 Human Q8IWU2
Synonyms:	AATYK2; BREK; cprk; hBREK; KPI-2; KPI2; LMR2; PPP1R100
Note:	LMTK2 antibody detects endogenous levels of total LMTK2 protein.
Protein Families:	Druggable Genome, Protein Kinase, Transmembrane



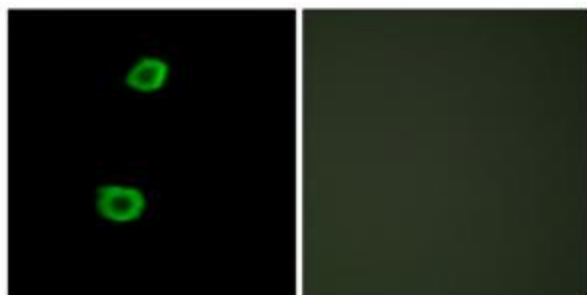
[View online »](#)

Product images:

Western blot analysis of extracts from LOVO cells, using LMTK2 antibody. The lane on the right is treated with the synthesized peptide.



Immunohistochemistry analysis of paraffin-embedded human brain tissue using LMTK2 antibody. The picture on the right is treated with the synthesized peptide.



Immunofluorescence analysis of HepG2 cells, using LMTK2 antibody. The picture on the right is treated with the synthesized peptide.