

Product datasheet for **TA315182**

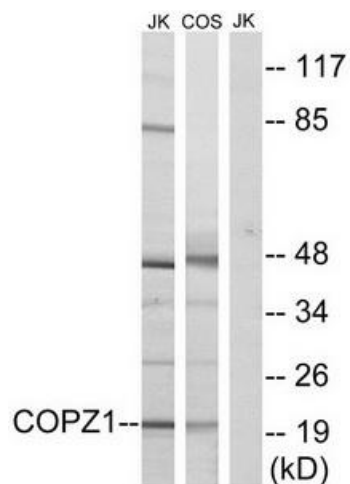
COPZ1 Rabbit Polyclonal Antibody

Product data:

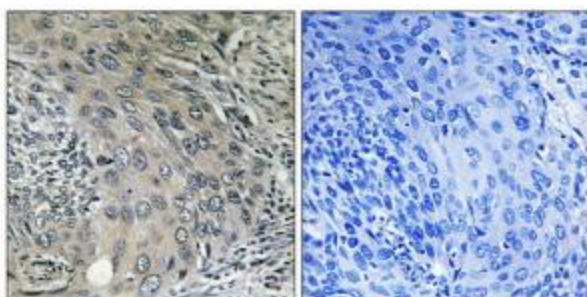
Product Type:	Primary Antibodies
Applications:	IHC, WB
Recommended Dilution:	WB: 1:500~1:3000, IHC: 1:50~1:100
Reactivity:	Human, Mouse
Host:	Rabbit
Isotype:	IgG
Clonality:	Polyclonal
Immunogen:	The antiserum was produced against synthesized peptide derived from internal of human COPZ1.
Formulation:	Phosphate buffered saline (without Mg ²⁺ and Ca ²⁺), pH 7.4, 150mM NaCl, 0.02% sodium azide and 50% glycerol.
Concentration:	lot specific
Purification:	The antibody was affinity-purified from rabbit antiserum by affinity-chromatography using epitope-specific immunogen.
Conjugation:	Unconjugated
Storage:	Store at -20°C as received.
Stability:	Stable for 12 months from date of receipt.
Gene Name:	coatmer protein complex subunit zeta 1
Database Link:	NP_057141 Entrez Gene 56447 Mouse Entrez Gene 22818 Human P61923
Synonyms:	CGI-120; COPZ; HSPC181; zeta-COP; zeta1-COP
Note:	COPZ1 antibody detects endogenous levels of total COPZ1 protein.



[View online »](#)

Product images:

Western blot analysis of extracts from Jurkat cells and COS cells, using COPZ1 antibody. The lane on the right is treated with the synthesized peptide.



Immunohistochemistry analysis of paraffin-embedded human cervix carcinoma tissue using COPZ1 antibody. The picture on the right is treated with the synthesized peptide.