

Product datasheet for **TA315181**

ZNFN1A2 (IKZF2) Rabbit Polyclonal Antibody

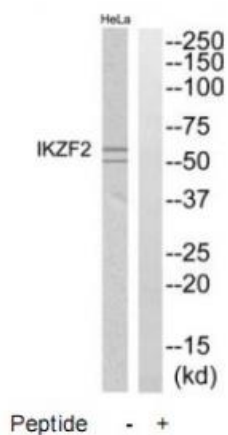
Product data:

Product Type:	Primary Antibodies
Applications:	WB
Recommended Dilution:	WB: 1:500~1:3000, ELISA: 1:40000
Reactivity:	Mouse, Human, Rat
Host:	Rabbit
Isotype:	IgG
Clonality:	Polyclonal
Immunogen:	The antiserum was produced against synthesized peptide derived from internal of human IKZF2.
Formulation:	Phosphate buffered saline (without Mg ²⁺ and Ca ²⁺), pH 7.4, 150mM NaCl, 0.02% sodium azide and 50% glycerol.
Concentration:	lot specific
Purification:	The antibody was affinity-purified from rabbit antiserum by affinity-chromatography using epitope-specific immunogen.
Conjugation:	Unconjugated
Storage:	Store at -20°C as received.
Stability:	Stable for 12 months from date of receipt.
Gene Name:	IKAROS family zinc finger 2
Database Link:	NP_001072994 Entrez Gene 22779 Mouse Entrez Gene 301476 Rat Entrez Gene 22807 Human Q9UKS7
Synonyms:	ANF1A2; HELIOS; ZNF1A2; ZNFN1A2
Note:	IKZF2 antibody detects endogenous levels of total IKZF2 protein.



[View online »](#)

Product images:



Western blot analysis of extracts from HeLa cells, using IKZF2 antibody. The lane on the right is treated with the synthesized peptide.