

Product datasheet for **TA315179**

XRN2 Rabbit Polyclonal Antibody

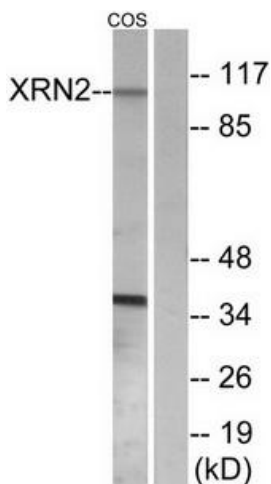
Product data:

Product Type:	Primary Antibodies
Applications:	IHC, WB
Recommended Dilution:	WB: 1:500~1:3000, IHC: 1:50~1:100, ELISA: 1:1000
Reactivity:	Human, Mouse
Host:	Rabbit
Isotype:	IgG
Clonality:	Polyclonal
Immunogen:	The antiserum was produced against synthesized peptide derived from internal of human XRN2.
Formulation:	Phosphate buffered saline (without Mg ²⁺ and Ca ²⁺), pH 7.4, 150mM NaCl, 0.02% sodium azide and 50% glycerol.
Concentration:	lot specific
Purification:	The antibody was affinity-purified from rabbit antiserum by affinity-chromatography using epitope-specific immunogen.
Conjugation:	Unconjugated
Storage:	Store at -20°C as received.
Stability:	Stable for 12 months from date of receipt.
Gene Name:	5'-3' exoribonuclease 2
Database Link:	NP_036387 Entrez Gene 24128 Mouse Entrez Gene 22803 Human Q9H0D6
Synonyms:	5'-3' exoribonuclease 2; Dhm1-like protein (mouse homolog); OTTHUMP00000030403
Note:	XRN2 antibody detects endogenous levels of total XRN2 protein.
Protein Pathways:	RNA degradation

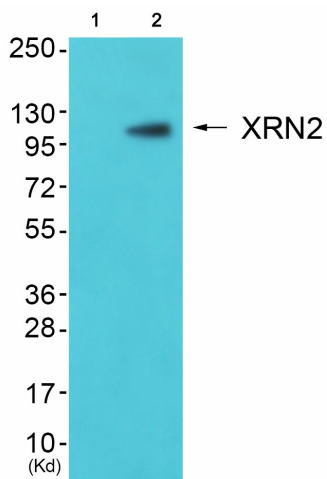


[View online »](#)

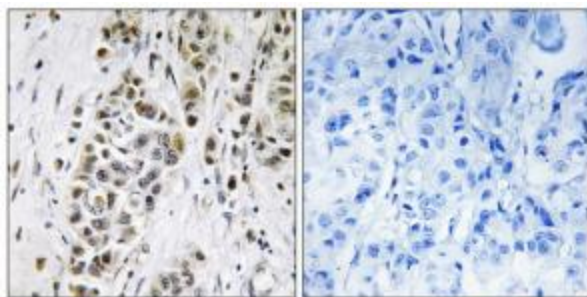
Product images:



Western blot analysis of extracts from COS-7 cells, using XRN2 antibody. The lane on the right is treated with the synthesized peptide.



Western blot analysis of extracts from 3T3 cells (Lane 2), using XRN2 Antibody. The lane on the left is treated with synthesized peptide.



Peptide - +Immunohistochemistry analysis of paraffin-embedded human breast carcinoma tissue using XRN2 antibody. The picture on the right is treated with the synthesized peptide.