

Product datasheet for **TA315175**

Prkcb Rabbit Polyclonal Antibody

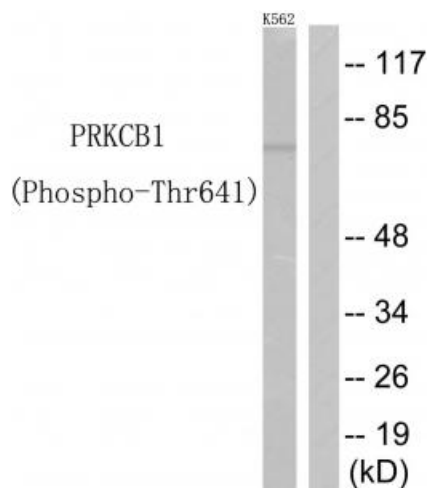
Product data:

Product Type:	Primary Antibodies
Applications:	WB
Recommended Dilution:	WB: 1:500~1:3000, ELISA: 1:10000
Reactivity:	Mouse
Modifications:	Phospho-specific
Host:	Rabbit
Isotype:	IgG
Clonality:	Polyclonal
Immunogen:	The antiserum was produced against synthesized phosphopeptide derived from human PRKCB around the phosphorylation site of threonine 641.
Formulation:	Phosphate buffered saline (without Mg ²⁺ and Ca ²⁺), pH 7.4, 150mM NaCl, 0.02% sodium azide and 50% glycerol.
Concentration:	lot specific
Purification:	The antibody was affinity-purified from rabbit antiserum by affinity-chromatography using epitope-specific immunogen.
Conjugation:	Unconjugated
Storage:	Store at -20°C as received.
Stability:	Stable for 12 months from date of receipt.
Gene Name:	protein kinase C, beta
Database Link:	NP_032881 Entrez Gene 18751 Mouse P68404
Synonyms:	MGC41878; PKC-B; PKC-beta; PKCB; PRKCB1; PRKCB2
Note:	PRKCB1 (Phospho-Thr641) antibody detects endogenous levels of PRKCB only when phosphorylated at threonine 641.



[View online »](#)

Product images:



Western blot analysis of extracts from K562 cells, using PRKCB1 (Phospho-Thr641) antibody. The lane on the right is treated with the synthesized peptide.