

Product datasheet for **TA315174**

Fadd Rabbit Polyclonal Antibody

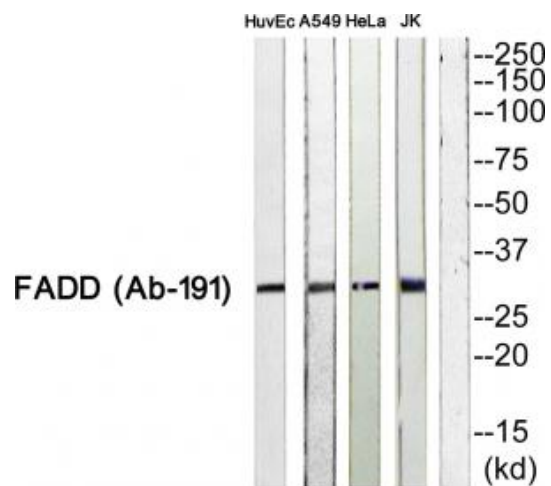
Product data:

Product Type:	Primary Antibodies
Applications:	WB
Recommended Dilution:	WB: 1:500~1:3000, ELISA: 1:40000
Reactivity:	Human, Mouse
Host:	Rabbit
Isotype:	IgG
Clonality:	Polyclonal
Immunogen:	The antiserum was produced against synthesized peptide derived from C-terminal of human FADD.
Formulation:	Phosphate buffered saline (without Mg ²⁺ and Ca ²⁺), pH 7.4, 150mM NaCl, 0.02% sodium azide and 50% glycerol.
Concentration:	lot specific
Purification:	The antibody was affinity-purified from rabbit antiserum by affinity-chromatography using epitope-specific immunogen.
Conjugation:	Unconjugated
Storage:	Store at -20°C as received.
Stability:	Stable for 12 months from date of receipt.
Gene Name:	Fas (TNFRSF6)-associated via death domain
Database Link:	AAH04584 Entrez Gene 8772 Human Entrez Gene 14082 Mouse Q61160
Synonyms:	GIG3; MGC8528; MORT1
Note:	FADD (Ab-191) antibody detects endogenous levels of total FADD protein.



[View online »](#)

Product images:



Western blot analysis of extracts from HuvEc cells, A549 cells, HeLa cells and JurKat cells, using FADD (Ab-191) antibody. The lane on the right is treated with the synthesized peptide.