

Product datasheet for **TA315173**

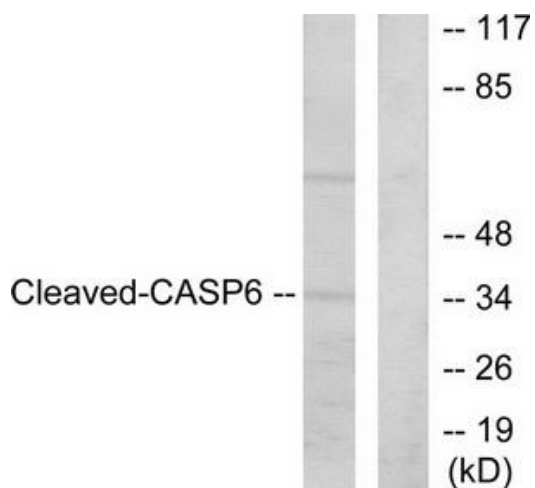
Casp6 Rabbit Polyclonal Antibody

Product data:

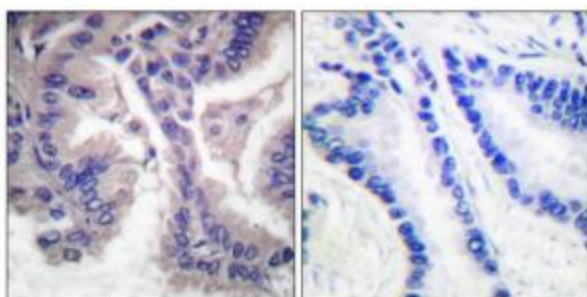
Product Type:	Primary Antibodies
Applications:	IHC, WB
Recommended Dilution:	WB: 1:500~1:3000, IHC: 1:50~1:100, ELISA: 1:10000
Reactivity:	Mouse, Rat
Host:	Rabbit
Isotype:	IgG
Clonality:	Polyclonal
Immunogen:	The antiserum was produced against synthesized peptide derived from mouse Caspase 6.
Formulation:	Phosphate buffered saline (without Mg ²⁺ and Ca ²⁺), pH 7.4, 150mM NaCl, 0.02% sodium azide and 50% glycerol.
Concentration:	lot specific
Purification:	The antibody was affinity-purified from rabbit antiserum by affinity-chromatography using epitope-specific immunogen.
Conjugation:	Unconjugated
Storage:	Store at -20°C as received.
Stability:	Stable for 12 months from date of receipt.
Gene Name:	caspase 6
Database Link:	NP_033941 Entrez Gene 83584 Rat Entrez Gene 12368 Mouse O08738
Synonyms:	CASP-6; MCH2
Note:	Caspase 6 (cleaved-Asp162) antibody detects endogenous levels of fragment of activated Caspase 6 resulting from cleavage adjacent to Asp162.



[View online »](#)

Product images:

Western blot analysis of extracts from HeLa cells, treated with etoposide (25 μ M, 1 hour), using Caspase 6 (cleaved-Asp162) antibody. The lane on the right is treated with the synthesized peptide.



Immunohistochemical analysis of paraffin-embedded human lung carcinoma tissue, using Caspase 6 (cleaved-Asp162) antibody. The picture on the right is treated with the synthesized peptide.