

Product datasheet for **TA315171**

Ataxin 2 like (ATXN2L) Rabbit Polyclonal Antibody

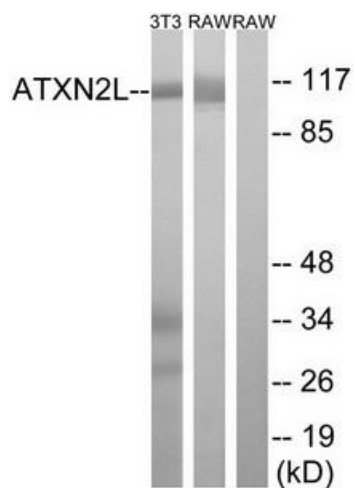
Product data:

Product Type:	Primary Antibodies
Applications:	WB
Recommended Dilution:	WB: 1:500~1:3000, ELISA: 1:1000
Reactivity:	Human
Host:	Rabbit
Isotype:	IgG
Clonality:	Polyclonal
Immunogen:	The antiserum was produced against synthesized peptide derived from internal of human ATXN2L.
Formulation:	Phosphate buffered saline (without Mg ²⁺ and Ca ²⁺), pH 7.4, 150mM NaCl, 0.02% sodium azide and 50% glycerol.
Concentration:	lot specific
Purification:	The antibody was affinity-purified from rabbit antiserum by affinity-chromatography using epitope-specific immunogen.
Conjugation:	Unconjugated
Storage:	Store at -20°C as received.
Stability:	Stable for 12 months from date of receipt.
Gene Name:	ataxin 2 like
Database Link:	NP_009176 Entrez Gene 11273 Human Q8WWM7
Synonyms:	A2D; A2LG; A2LP; A2RP
Note:	ATXN2L antibody detects endogenous levels of total ATXN2L protein.



[View online »](#)

Product images:



Western blot analysis of extracts from 3T3 cells and RAW264.7 cells, using ATXN2L antibody. The lane on the right is treated with the synthesized peptide.