

Product datasheet for **TA315164**

JM4 (PRAF2) Rabbit Polyclonal Antibody

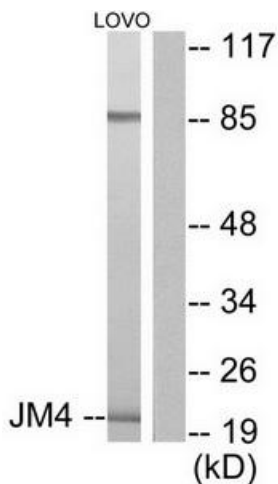
Product data:

Product Type:	Primary Antibodies
Applications:	IHC, WB
Recommended Dilution:	WB: 1:500~1:3000, IHC: 1:50~1:100, ELISA: 1:40000
Reactivity:	Human, Mouse, Rat
Host:	Rabbit
Isotype:	IgG
Clonality:	Polyclonal
Immunogen:	The antiserum was produced against synthesized peptide derived from human JM4.
Formulation:	Phosphate buffered saline (without Mg ²⁺ and Ca ²⁺), pH 7.4, 150mM NaCl, 0.02% sodium azide and 50% glycerol.
Concentration:	lot specific
Purification:	The antibody was affinity-purified from rabbit antiserum by affinity-chromatography using epitope-specific immunogen.
Conjugation:	Unconjugated
Storage:	Store at -20°C as received.
Stability:	Stable for 12 months from date of receipt.
Gene Name:	PRA1 domain family member 2
Database Link:	NP_009144 Entrez Gene 54637 Mouse Entrez Gene 367743 Rat Entrez Gene 11230 Human O60831
Synonyms:	JM4; Yip6a
Note:	JM4 antibody detects endogenous levels of total JM4 protein.
Protein Families:	Transmembrane

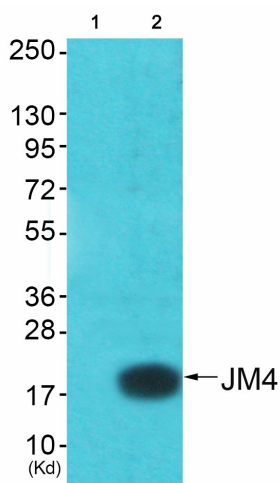


[View online »](#)

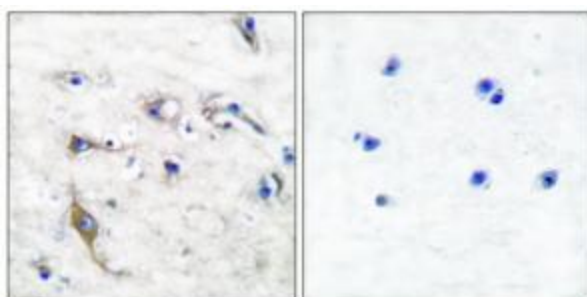
Product images:



Western blot analysis of extracts from LOVO cells, using JM4 antibody (#TA315164).The lane on the right is treated with the synthesized peptide.



Western blot analysis of extracts from A549 cells (Lane 2), using JM4 Antibody. The lane on the left is treated with synthesized peptide.



Immunohistochemical analysis of paraffin-embedded human brain tissue using JM4 antibody (#TA315164).The picture on the right is treated with the synthesized peptide.