

Product datasheet for **TA315159**

AKAP13 Rabbit Polyclonal Antibody

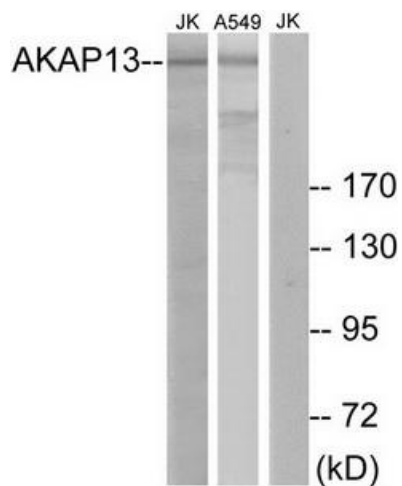
Product data:

Product Type:	Primary Antibodies
Applications:	IHC, WB
Recommended Dilution:	WB: 1:500~1:3000, IHC: 1:50~1:100, ELISA: 1:20000
Reactivity:	Human
Host:	Rabbit
Isotype:	IgG
Clonality:	Polyclonal
Immunogen:	The antiserum was produced against synthesized peptide derived from internal of human AKAP13.
Formulation:	Phosphate buffered saline (without Mg ²⁺ and Ca ²⁺), pH 7.4, 150mM NaCl, 0.02% sodium azide and 50% glycerol.
Concentration:	lot specific
Purification:	The antibody was affinity-purified from rabbit antiserum by affinity-chromatography using epitope-specific immunogen.
Conjugation:	Unconjugated
Storage:	Store at -20°C as received.
Stability:	Stable for 12 months from date of receipt.
Gene Name:	A-kinase anchoring protein 13
Database Link:	NP_658913 Entrez Gene 11214 Human Q12802
Synonyms:	AKAP-Lbc; ARHGEF13; BRX; c-lbc; HA-3; Ht31; LBC; PRKA13; PROTO-LB; PROTO-LBC
Note:	AKAP13 antibody detects endogenous levels of total AKAP13 protein.
Protein Families:	Druggable Genome

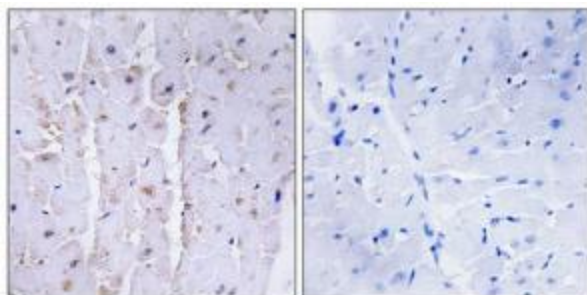


[View online »](#)

Product images:



Western blot analysis of extracts from Jurkat cells and A549 cells, using AKAP13 antibody. The lane on the right is treated with the synthesized peptide.



Immunohistochemistry analysis of paraffin-embedded human lung carcinoma tissue using AKAP13 antibody. The picture on the right is treated with the synthesized peptide.