

Product datasheet for **TA315157**

BAZ2A Rabbit Polyclonal Antibody

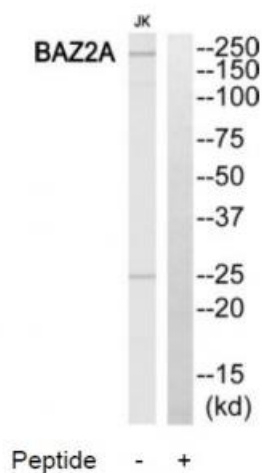
Product data:

Product Type:	Primary Antibodies
Applications:	WB
Recommended Dilution:	WB: 1:500~1:3000, ELISA: 1:5000
Reactivity:	Human
Host:	Rabbit
Isotype:	IgG
Clonality:	Polyclonal
Immunogen:	The antiserum was produced against synthesized peptide derived from internal of human BAZ2A.
Formulation:	Phosphate buffered saline (without Mg ²⁺ and Ca ²⁺), pH 7.4, 150mM NaCl, 0.02% sodium azide and 50% glycerol.
Concentration:	lot specific
Purification:	The antibody was affinity-purified from rabbit antiserum by affinity-chromatography using epitope-specific immunogen.
Conjugation:	Unconjugated
Storage:	Store at -20°C as received.
Stability:	Stable for 12 months from date of receipt.
Gene Name:	bromodomain adjacent to zinc finger domain 2A
Database Link:	NP_038477 Entrez Gene 11176 Human Q9UIF9
Synonyms:	TIP5; WALp3
Note:	BAZ2A antibody detects endogenous levels of total BAZ2A protein.
Protein Families:	Druggable Genome



[View online »](#)

Product images:



Western blot analysis of extracts from Jurkat cells, using BAZ2A antibody. The lane on the right is treated with the synthesized peptide.