

## Product datasheet for **TA315156**

### WDHD1 Rabbit Polyclonal Antibody

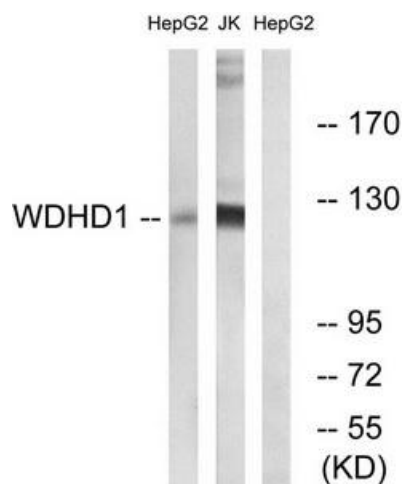
#### Product data:

Product Type:	Primary Antibodies
Applications:	WB
Recommended Dilution:	WB: 1:500~1:3000, ELISA: 1:10000
Reactivity:	Human
Host:	Rabbit
Isotype:	IgG
Clonality:	Polyclonal
Immunogen:	The antiserum was produced against synthesized peptide derived from internal of human WDHD1.
Formulation:	Phosphate buffered saline (without Mg <sup>2+</sup> and Ca <sup>2+</sup> ), pH 7.4, 150mM NaCl, 0.02% sodium azide and 50% glycerol.
Concentration:	lot specific
Purification:	The antibody was affinity-purified from rabbit antiserum by affinity-chromatography using epitope-specific immunogen.
Conjugation:	Unconjugated
Storage:	Store at -20°C as received.
Stability:	Stable for 12 months from date of receipt.
Gene Name:	WD repeat and HMG-box DNA binding protein 1
Database Link:	<a href="#">NP_001008397</a> <a href="#">Entrez Gene 11169 Human</a> <a href="#">Q75717</a>
Synonyms:	AND-1; AND1; CHTF4; CTF4
Note:	WDHD1 antibody detects endogenous levels of total WDHD1 protein.
Protein Families:	Druggable Genome, Transcription Factors



[View online »](#)

Product images:



Western blot analysis of extracts from HepG2 cells and Jurkat cells, using WDHD1 antibody. The lane on the right is treated with the synthesized peptide.