

Product datasheet for **TA315151**

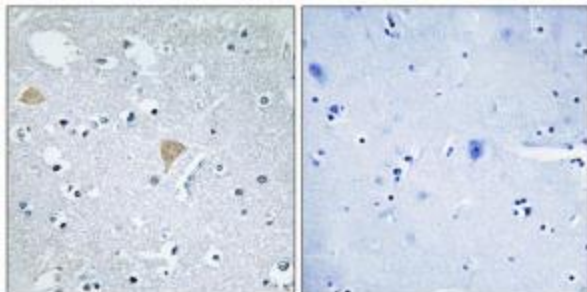
CIT Rabbit Polyclonal Antibody

Product data:

Product Type:	Primary Antibodies
Applications:	IHC
Recommended Dilution:	IHC: 1:50~1:100, ELISA: 1:40000
Reactivity:	Human, Mouse
Host:	Rabbit
Isotype:	IgG
Clonality:	Polyclonal
Immunogen:	The antiserum was produced against synthesized peptide derived from internal of human CTRO.
Formulation:	Phosphate buffered saline (without Mg ²⁺ and Ca ²⁺), pH 7.4, 150mM NaCl, 0.02% sodium azide and 50% glycerol.
Concentration:	lot specific
Purification:	The antibody was affinity-purified from rabbit antiserum by affinity-chromatography using epitope-specific immunogen.
Conjugation:	Unconjugated
Storage:	Store at -20°C as received.
Stability:	Stable for 12 months from date of receipt.
Gene Name:	citron rho-interacting serine/threonine kinase
Database Link:	NP_009105 Entrez Gene 12704 Mouse Entrez Gene 11113 Human O14578
Synonyms:	CRIK; STK21
Note:	CTRO antibody detects endogenous levels of total CTRO protein.
Protein Families:	Druggable Genome, Protein Kinase



[View online »](#)

Product images:

Immunohistochemistry analysis of paraffin-embedded human brain tissue using CTRO antibody. The picture on the right is treated with the synthesized peptide.