

Product datasheet for **TA315149**

DATF1 (DIDO1) Rabbit Polyclonal Antibody

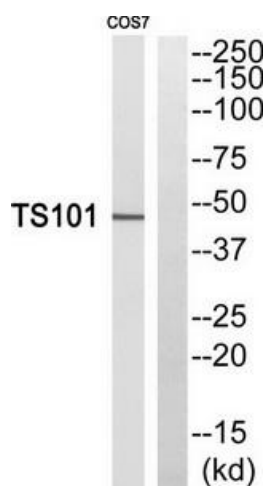
Product data:

Product Type:	Primary Antibodies
Applications:	WB
Recommended Dilution:	WB: 1:500~1:3000, ELISA: 1:10000
Reactivity:	Human, Mouse
Host:	Rabbit
Isotype:	IgG
Clonality:	Polyclonal
Immunogen:	The antiserum was produced against synthesized peptide derived from internal of human DIDO1.
Formulation:	Phosphate buffered saline (without Mg ²⁺ and Ca ²⁺), pH 7.4, 150mM NaCl, 0.02% sodium azide and 50% glycerol.
Concentration:	lot specific
Purification:	The antibody was affinity-purified from rabbit antiserum by affinity-chromatography using epitope-specific immunogen.
Conjugation:	Unconjugated
Storage:	Store at -20°C as received.
Stability:	Stable for 12 months from date of receipt.
Gene Name:	death inducer-obliterator 1
Database Link:	NP_542987 Entrez Gene 23856 Mouse Entrez Gene 11083 Human Q9BTC0
Synonyms:	BYE1; C20orf158; DATF-1; DATF1; DIDO2; DIDO3; DIO-1; DIO1; dj885L7.8
Note:	DIDO1 antibody detects endogenous levels of total DIDO1 protein.
Protein Families:	Druggable Genome, Transcription Factors



[View online »](#)

Product images:



Western blot analysis of extracts from 293 cells, using DIDO1 antibody. The lane on the right is treated with the synthesized peptide.