

## Product datasheet for **TA315141**

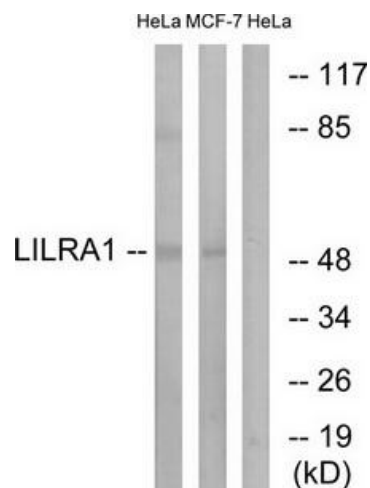
### LILRA1 Rabbit Polyclonal Antibody

#### Product data:

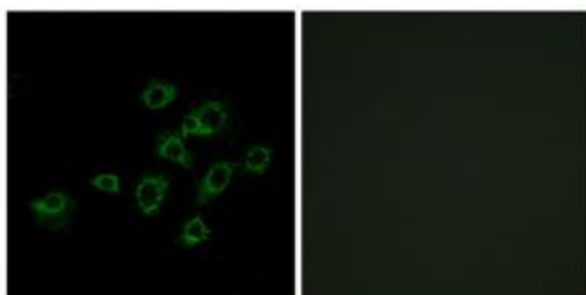
Product Type:	Primary Antibodies
Applications:	IF, WB
Recommended Dilution:	WB: 1:500~1:3000, IF: 1:100~1:500, ELISA: 1:20000
Reactivity:	Human
Host:	Rabbit
Isotype:	IgG
Clonality:	Polyclonal
Immunogen:	The antiserum was produced against synthesized peptide derived from internal of human LILRA1.
Formulation:	Phosphate buffered saline (without Mg <sup>2+</sup> and Ca <sup>2+</sup> ), pH 7.4, 150mM NaCl, 0.02% sodium azide and 50% glycerol.
Concentration:	lot specific
Purification:	The antibody was affinity-purified from rabbit antiserum by affinity-chromatography using epitope-specific immunogen.
Conjugation:	Unconjugated
Storage:	Store at -20°C as received.
Stability:	Stable for 12 months from date of receipt.
Gene Name:	leukocyte immunoglobulin like receptor A1
Database Link:	<a href="#">NP_006854</a> <a href="#">Entrez Gene 11024 Human</a> <a href="#">Q75019</a>
Synonyms:	CD85I; LIR-6; LIR6
Note:	LILRA1 antibody detects endogenous levels of total LILRA1 protein.



[View online »](#)

**Product images:**


Western blot analysis of extracts from HeLa cells and MCF-7 cells, using LILRA1 antibody. The lane on the right is treated with the synthesized peptide.



Immunofluorescence analysis of A549 cells, using LILRA1 antibody. The picture on the right is treated with the synthesized peptide.