

Product datasheet for **TA315133**

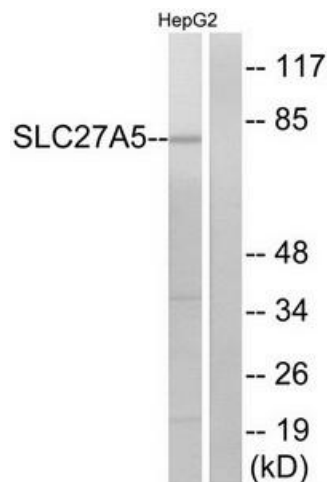
SLC27A5 Rabbit Polyclonal Antibody

Product data:

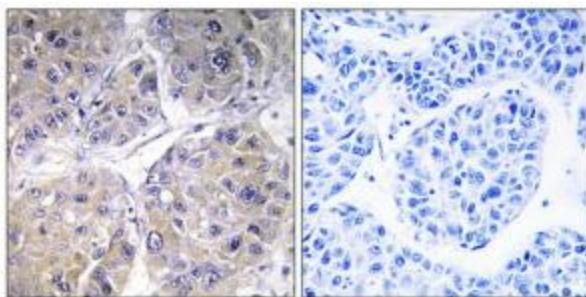
Product Type:	Primary Antibodies
Applications:	IF, IHC, WB
Recommended Dilution:	WB: 1:500~1:3000, IHC: 1:50~1:100, IF: 1:100~1:500, ELISA: 1:40000
Reactivity:	Human
Host:	Rabbit
Isotype:	IgG
Clonality:	Polyclonal
Immunogen:	The antiserum was produced against synthesized peptide derived from internal of human SLC27A5.
Formulation:	Phosphate buffered saline (without Mg ²⁺ and Ca ²⁺), pH 7.4, 150mM NaCl, 0.02% sodium azide and 50% glycerol.
Concentration:	lot specific
Purification:	The antibody was affinity-purified from rabbit antiserum by affinity-chromatography using epitope-specific immunogen.
Conjugation:	Unconjugated
Storage:	Store at -20°C as received.
Stability:	Stable for 12 months from date of receipt.
Gene Name:	solute carrier family 27 member 5
Database Link:	NP_036386 Entrez Gene 10998 Human Q9Y2P5
Synonyms:	ACSB; ACSVL6; BACS; BAL; FACVL3; FATP-5; FATP5; VLACSR; VLCS-H2; VLCSH2
Note:	SLC27A5 antibody detects endogenous levels of total SLC27A5 protein.
Protein Families:	Transmembrane
Protein Pathways:	Metabolic pathways, PPAR signaling pathway, Primary bile acid biosynthesis



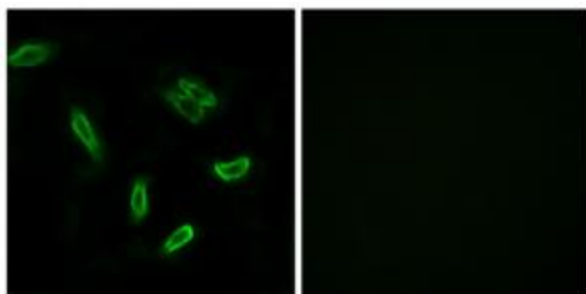
[View online »](#)

Product images:

Western blot analysis of extracts from HepG2 cells, using SLC27A5 antibody. The lane on the right is treated with the synthesized peptide.



Immunohistochemistry analysis of paraffin-embedded human liver carcinoma tissue using SLC27A5 antibody. The picture on the right is treated with the synthesized peptide.



Immunofluorescence analysis of A549 cells, using SLC27A5 antibody. The picture on the right is treated with the synthesized peptide.