

Product datasheet for **TA315130**

SERINC3 Rabbit Polyclonal Antibody

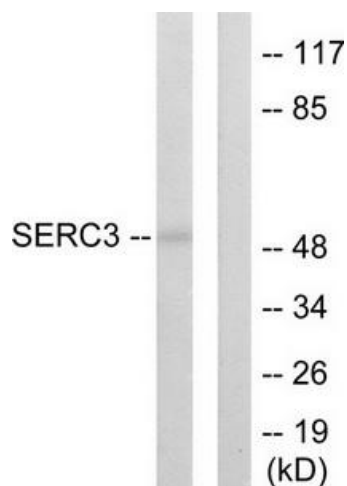
Product data:

Product Type:	Primary Antibodies
Applications:	IF, WB
Recommended Dilution:	WB: 1:500~1:3000, IF: 1:100~1:500, ELISA: 1:20000
Reactivity:	Human, Mouse, Rat
Host:	Rabbit
Isotype:	IgG
Clonality:	Polyclonal
Immunogen:	The antiserum was produced against synthesized peptide derived from C-terminal of human SERC3.
Formulation:	Phosphate buffered saline (without Mg ²⁺ and Ca ²⁺), pH 7.4, 150mM NaCl, 0.02% sodium azide and 50% glycerol.
Concentration:	lot specific
Purification:	The antibody was affinity-purified from rabbit antiserum by affinity-chromatography using epitope-specific immunogen.
Conjugation:	Unconjugated
Storage:	Store at -20°C as received.
Stability:	Stable for 12 months from date of receipt.
Gene Name:	serine incorporator 3
Database Link:	NP_006802 Entrez Gene 26943 Mouse Entrez Gene 296350 Rat Entrez Gene 10955 Human Q13530
Synonyms:	AIGP1; DIFF33; SBBI99; TDE; TDE1; TMS-1
Note:	SERC3 antibody detects endogenous levels of total SERC3 protein.
Protein Families:	Transmembrane

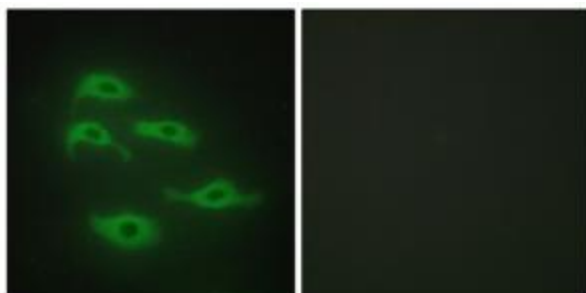


[View online »](#)

Product images:



Western blot analysis of extracts from 293 cells, using SERC3 antibody. The lane on the right is treated with the synthesized peptide.



Immunofluorescence analysis of HepG2 cells, using SERC3 antibody. The picture on the right is treated with the synthesized peptide.