

Product datasheet for **TA315128**

GPR75 Rabbit Polyclonal Antibody

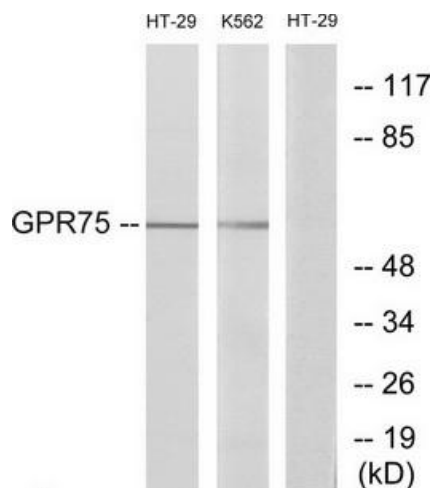
Product data:

Product Type:	Primary Antibodies
Applications:	IF, WB
Recommended Dilution:	WB: 1:500~1:3000, IF: 1:100~1:500, ELISA: 1:5000
Reactivity:	Human, Mouse
Host:	Rabbit
Isotype:	IgG
Clonality:	Polyclonal
Immunogen:	The antiserum was produced against synthesized peptide derived from internal of human GPR75.
Formulation:	Phosphate buffered saline (without Mg ²⁺ and Ca ²⁺), pH 7.4, 150mM NaCl, 0.02% sodium azide and 50% glycerol.
Concentration:	lot specific
Purification:	The antibody was affinity-purified from rabbit antiserum by affinity-chromatography using epitope-specific immunogen.
Conjugation:	Unconjugated
Storage:	Store at -20°C as received.
Stability:	Stable for 12 months from date of receipt.
Gene Name:	G protein-coupled receptor 75
Database Link:	NP_006785 Entrez Gene 237716 Mouse Entrez Gene 10936 Human O95800
Synonyms:	GPRchr2; WI31133
Note:	GPR75 antibody detects endogenous levels of total GPR75 protein.
Protein Families:	Druggable Genome, GPCR, Transmembrane

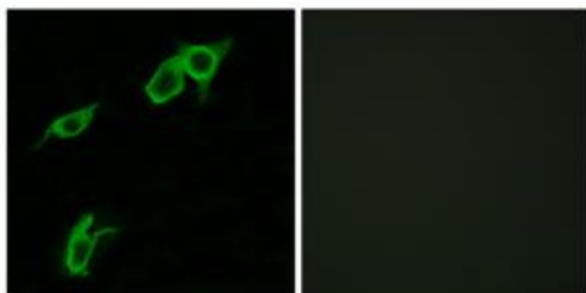


[View online »](#)

Product images:



Western blot analysis of extracts from HT-29 cells and K562 cells, using GPR75 antibody. The lane on the right is treated with the synthesized peptide.



Immunofluorescence analysis of LOVO cells, using GPR75 antibody. The picture on the right is treated with the synthesized peptide.