

Product datasheet for **TA315124**

DBF4 Rabbit Polyclonal Antibody

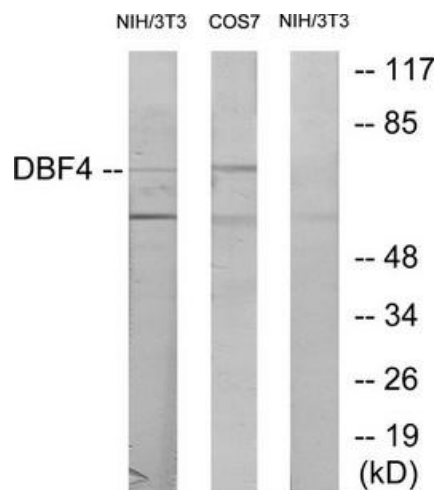
Product data:

Product Type:	Primary Antibodies
Applications:	WB
Recommended Dilution:	WB: 1:500~1:3000, ELISA: 1:10000
Reactivity:	Human, Mouse
Host:	Rabbit
Isotype:	IgG
Clonality:	Polyclonal
Immunogen:	The antiserum was produced against synthesized peptide derived from N-terminal of human DBF4.
Formulation:	Phosphate buffered saline (without Mg ²⁺ and Ca ²⁺), pH 7.4, 150mM NaCl, 0.02% sodium azide and 50% glycerol.
Concentration:	lot specific
Purification:	The antibody was affinity-purified from rabbit antiserum by affinity-chromatography using epitope-specific immunogen.
Conjugation:	Unconjugated
Storage:	Store at -20°C as received.
Stability:	Stable for 12 months from date of receipt.
Gene Name:	DBF4 zinc finger
Database Link:	NP_006707 Entrez Gene 27214 Mouse Entrez Gene 10926 Human Q9UBU7
Synonyms:	ASK; CHIF; DBF4A; ZDBF1
Note:	DBF4 antibody detects endogenous levels of total DBF4 protein.
Protein Families:	Druggable Genome
Protein Pathways:	Cell cycle



[View online »](#)

Product images:



Western blot analysis of extracts from NIH-3T3 cells treated with H₂O₂ (100uM, 30mins) and COS-7 cells treated with PMA (125mg/ml, 30mins), using DBF4 antibody. The lane on the right is treated with the synthesized peptide.